

III FORO HIDROCLIMÁTICO NACIONAL 2025

Encarnación
06 de Noviembre de 2025

OPSH.DT- División de Estudios Hidrológicos y Energéticos

OPS.DT - Departamento de Operación del Sistema

OP.DT - Superintendencia de Operación

DT - Dirección Técnica



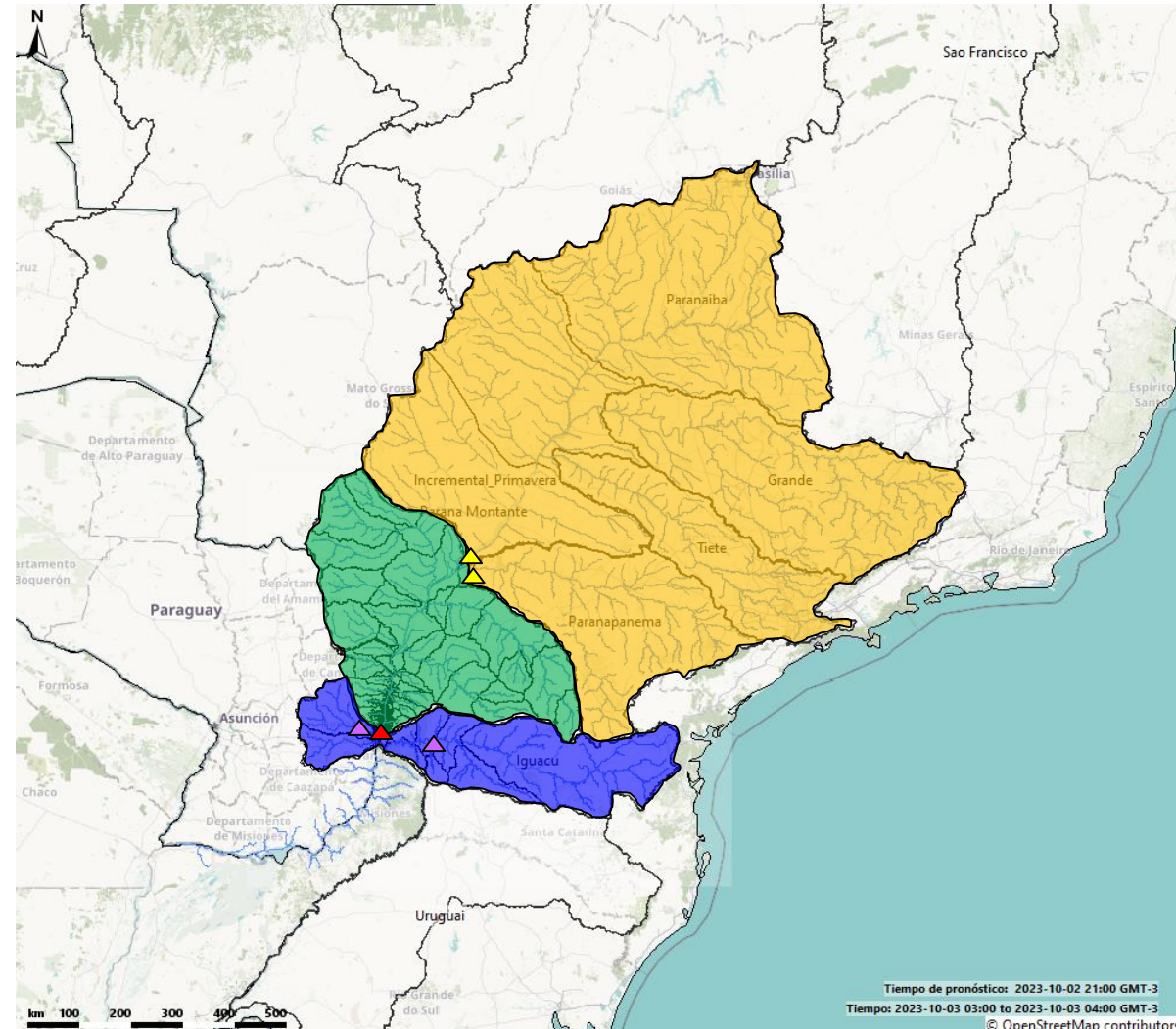
SISTEMA HÍDRICO DE ITAIPU

AGUAS ARRIBA

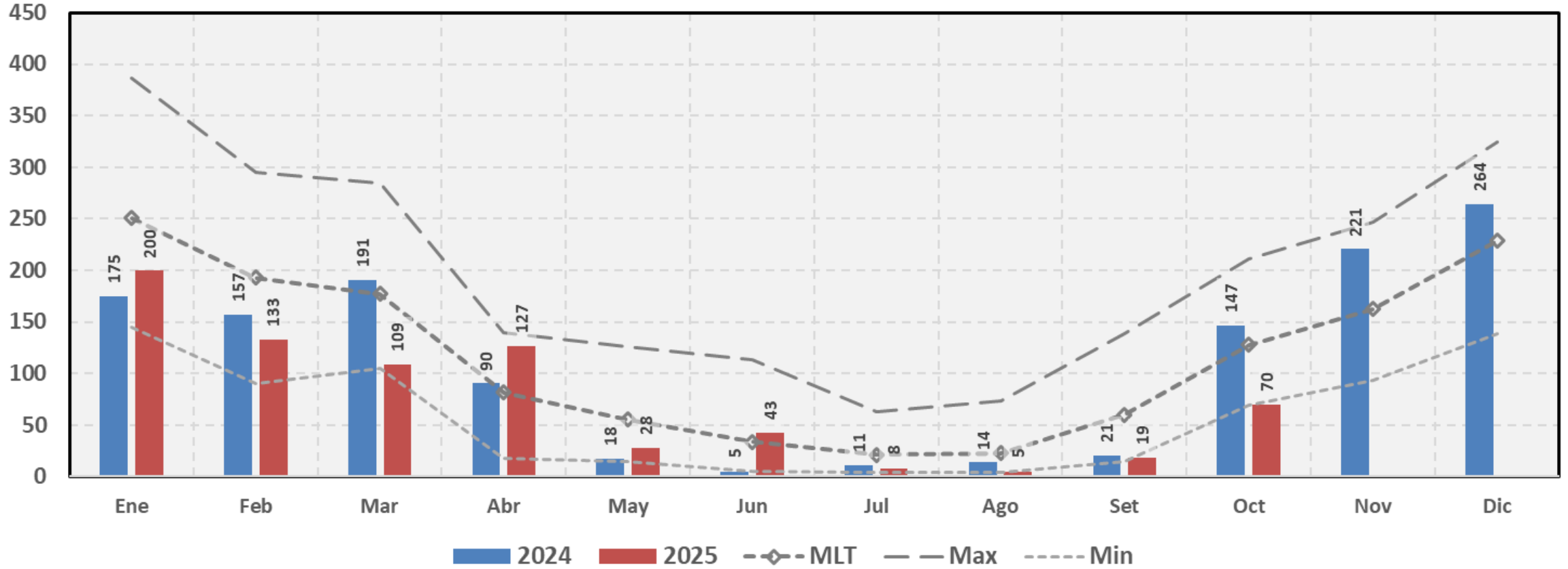
- CUENCA ALTA
 - Ríos formadores del río Paraná (Grande y Paranaíba)
 - Ríos tributarios al río Paraná (Tiete y Paranapanema)
 - Caudales Regulados (+ 50 Centrales)
 - Desembocadura: CH Porto Primavera y Rosana
- CUENCA INCREMENTAL
 - Ríos tributarios: Piquirí, Ivaí, Ivinhema, Amambaí e Iguatemi.
 - Caudales en estado natural
 - Desembocadura: CH Itaipu

AGUAS ABAJO

- CUENCA RÍO IGUAÇU
 - Caudales regulados (6 Centrales).
 - Desembocadura: CH Baixo Iguaçu
- CUENCAS MARGEN DERECHA
 - Río Monday
 - Río Acaray – Desembocadura CH Acaray

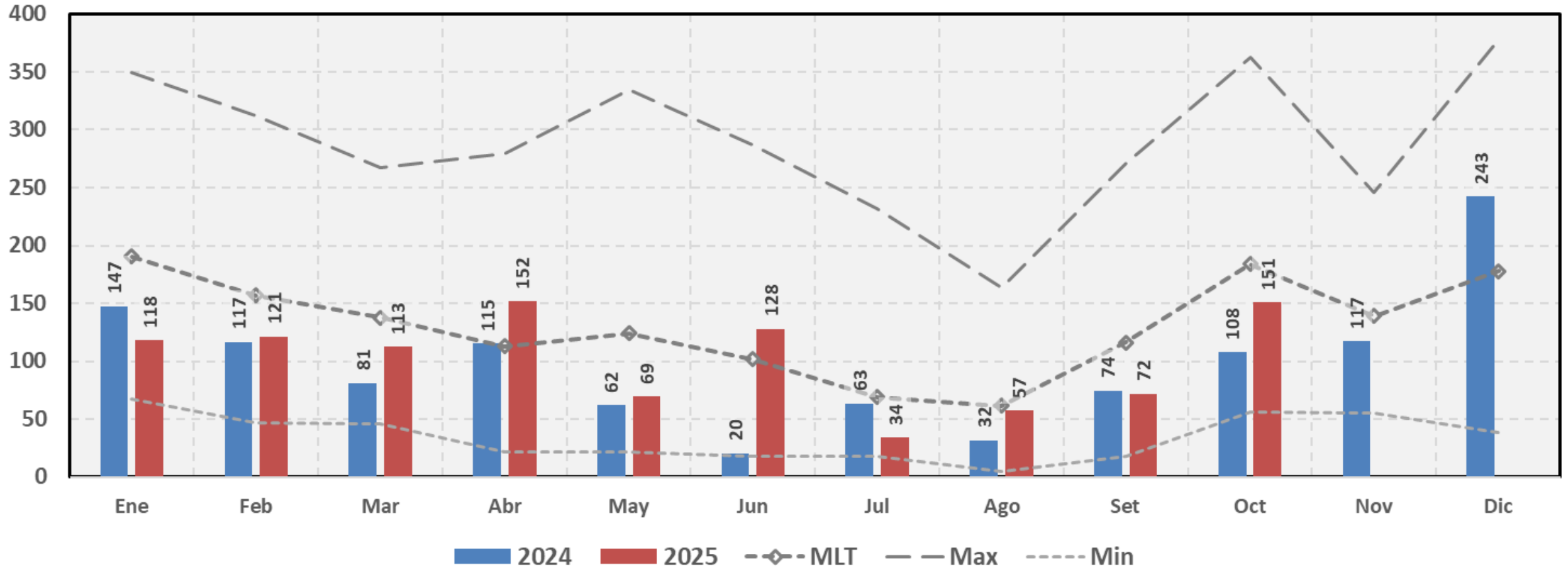


Precipitación Paraná Aguas Arriba - acumulado mensual (CHIRPS)

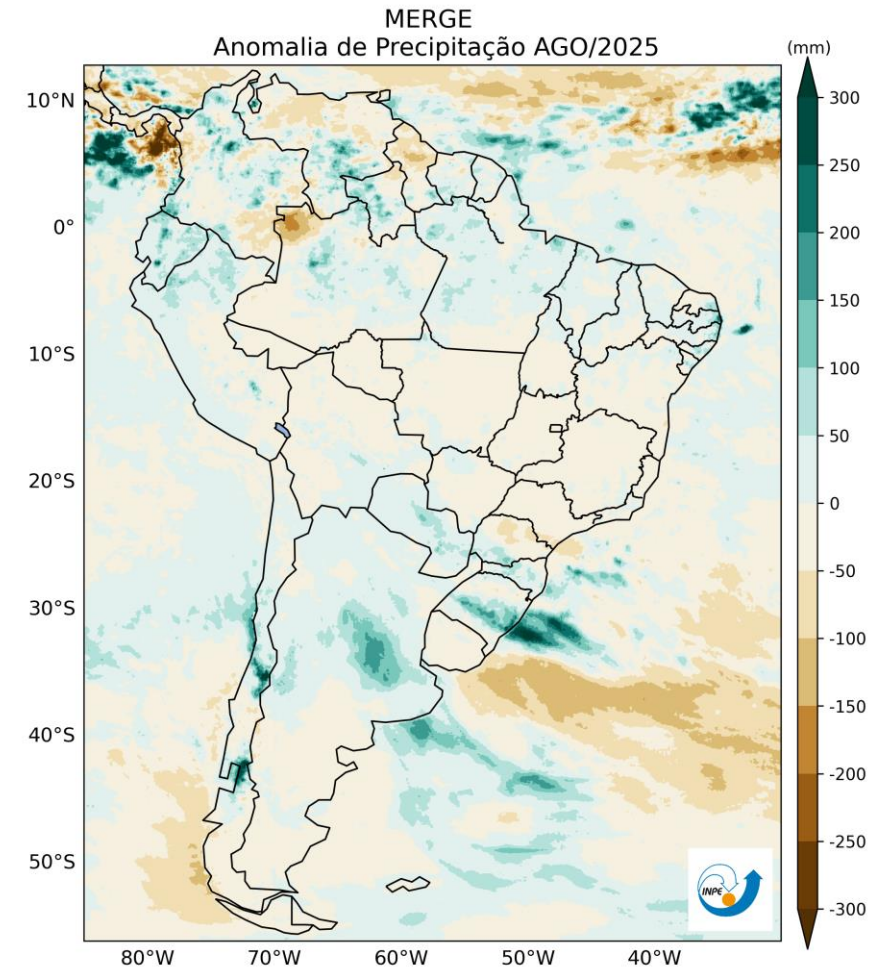
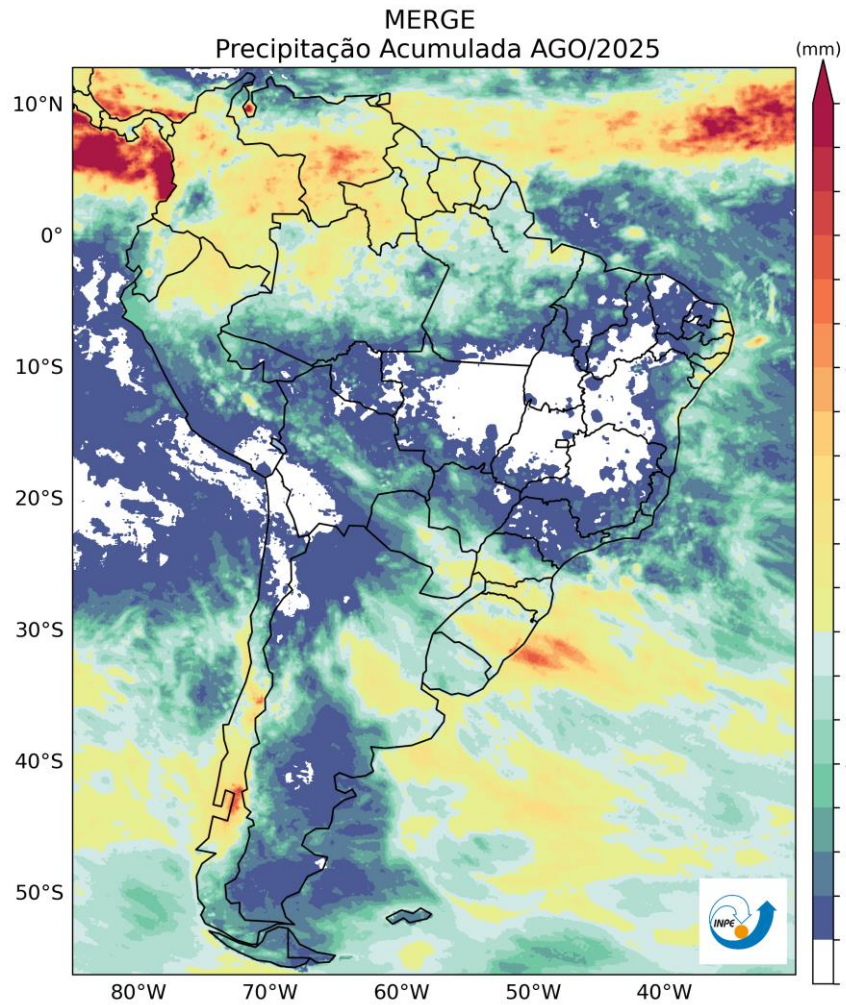


Cuenca Alta del Río Paraná

Precipitación Incremental - acumulado mensual (CHIRPS)

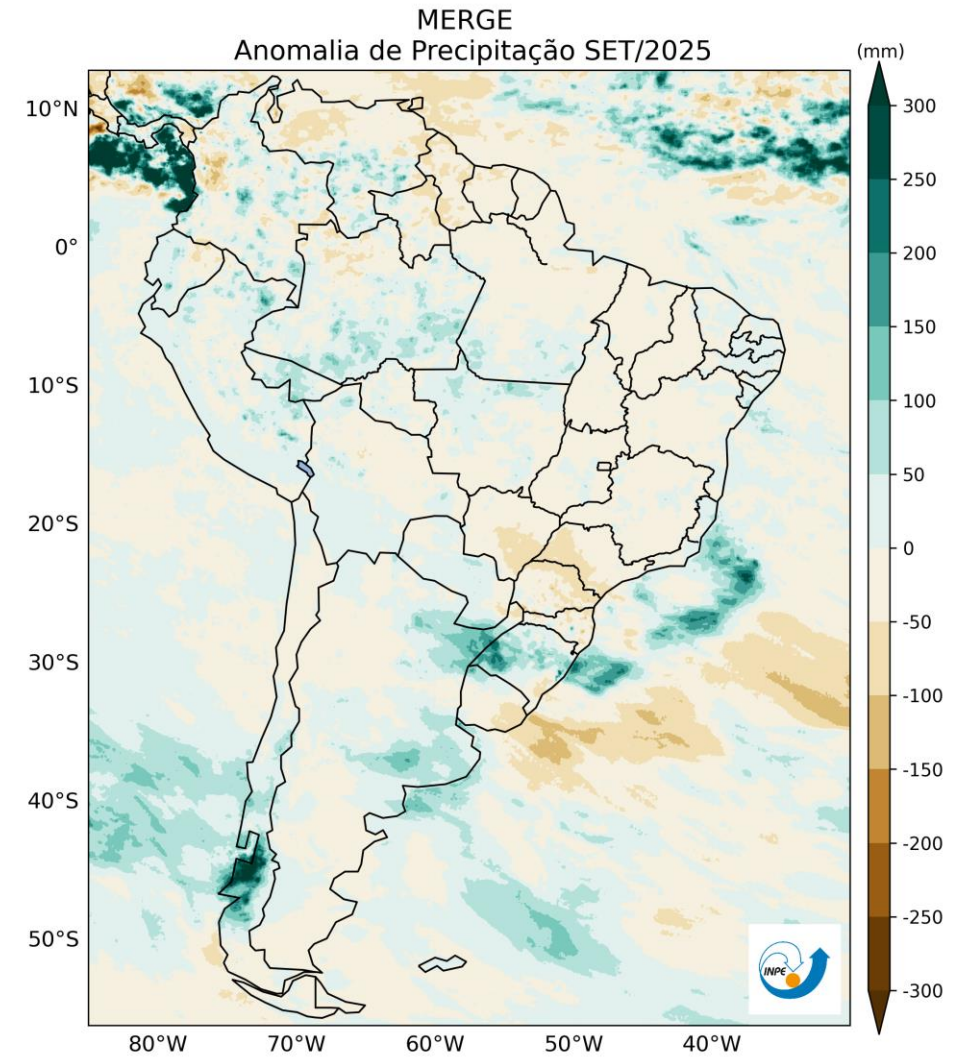
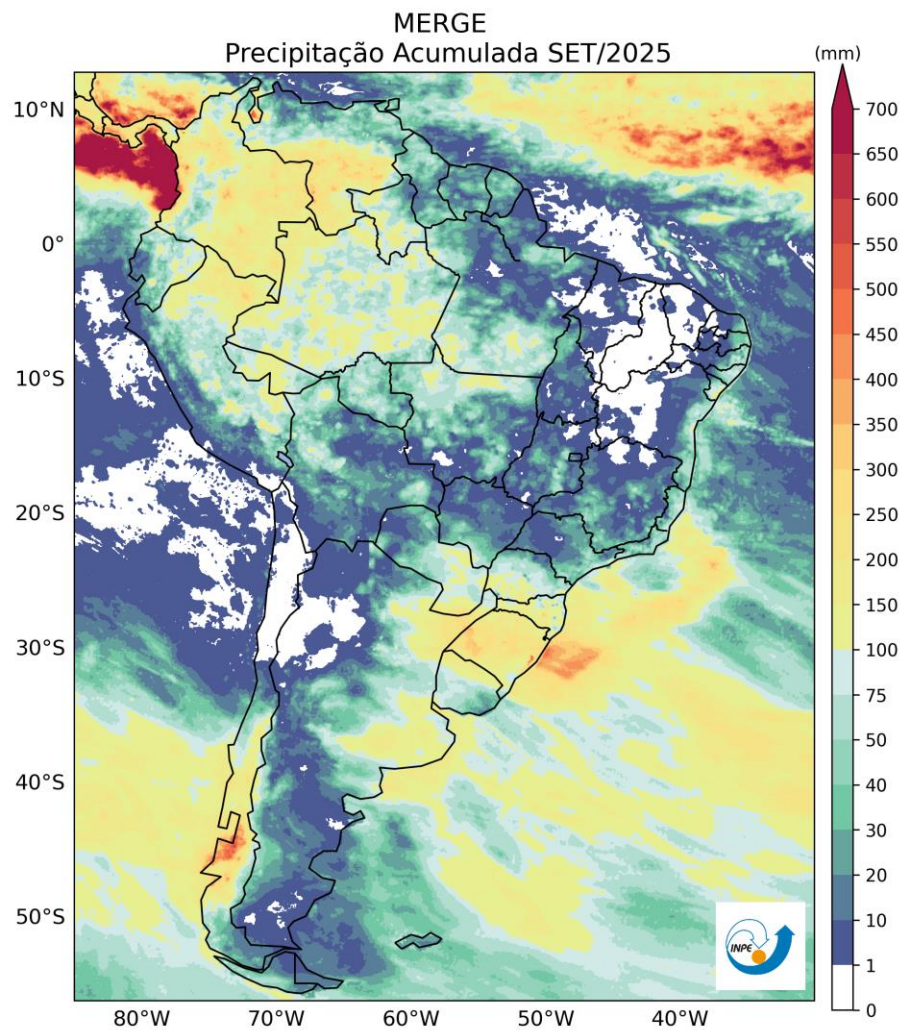


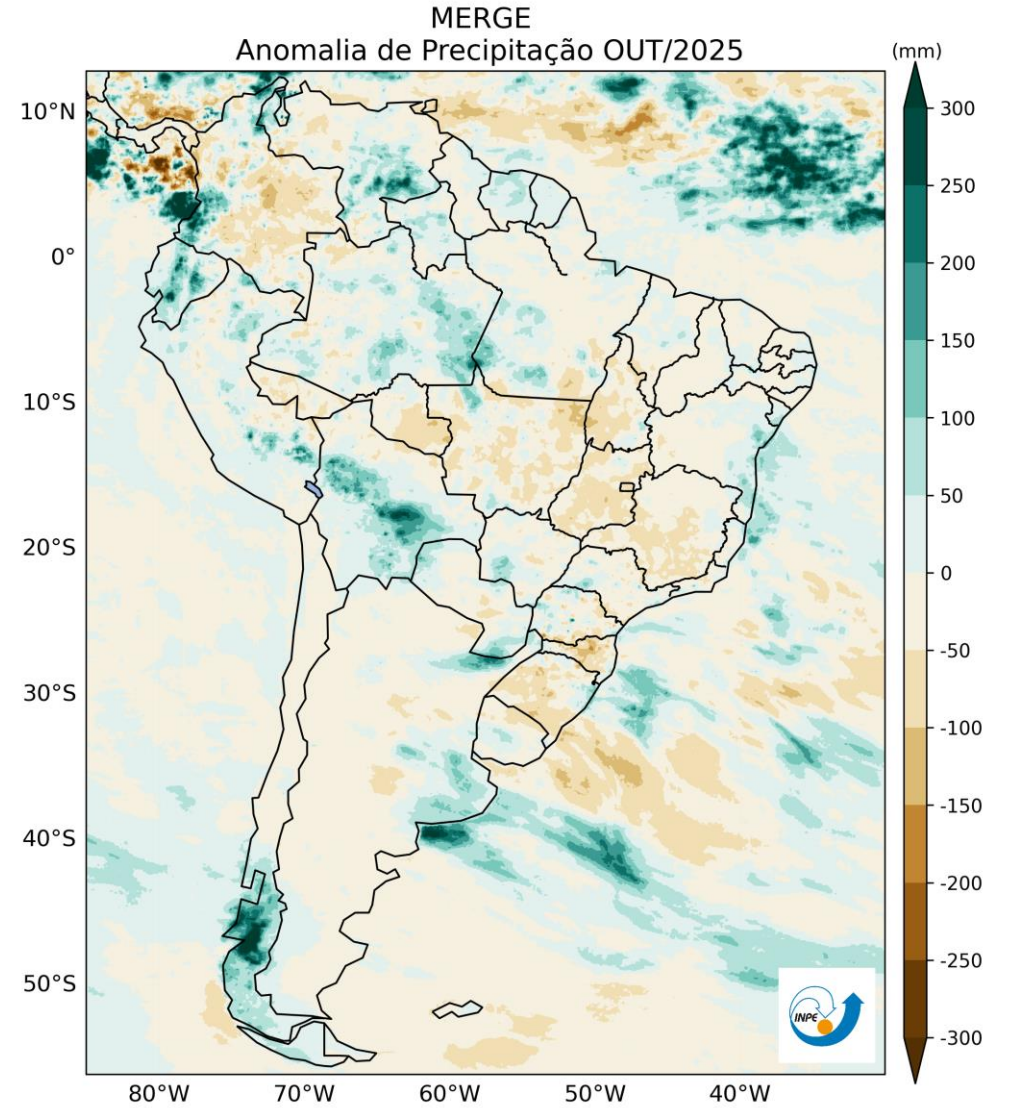
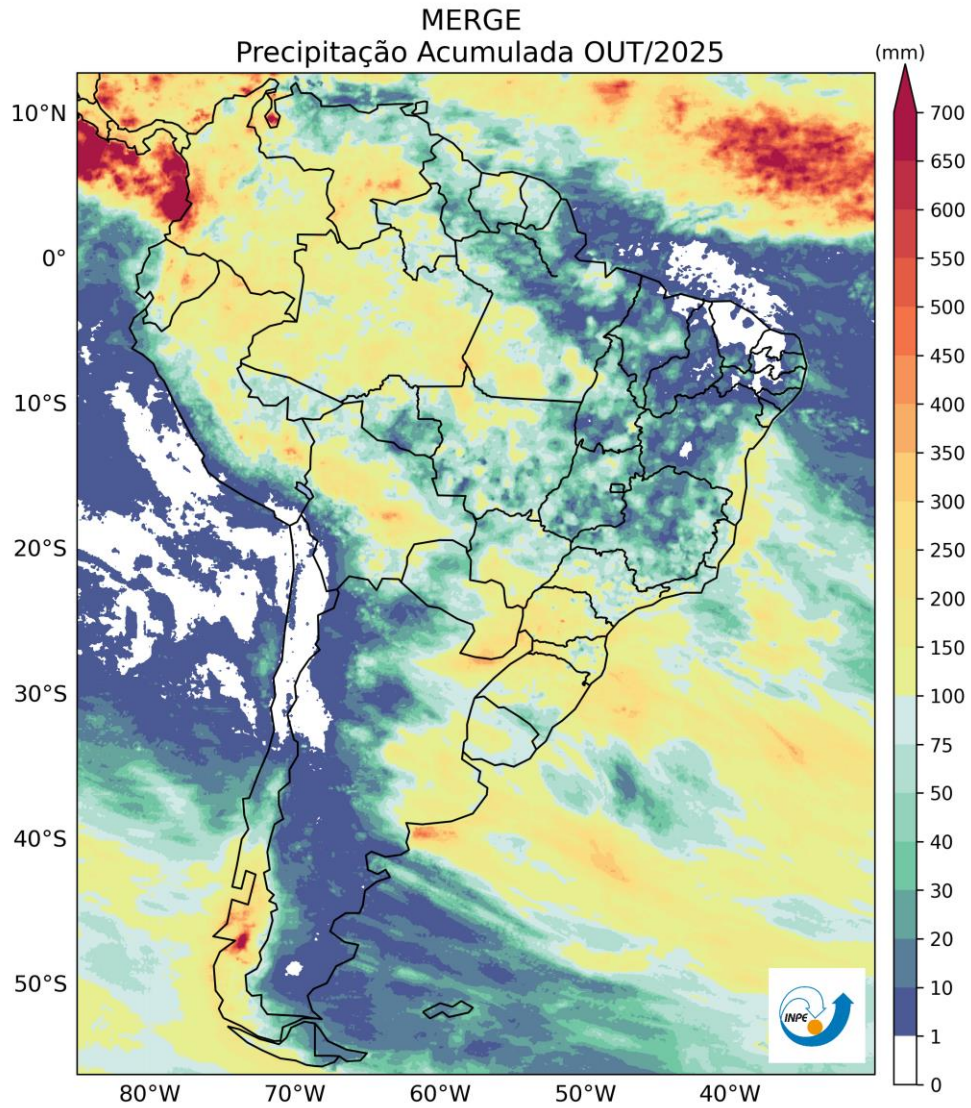
Cuenca Incremental Aguas Arriba Primavera - Itaipu

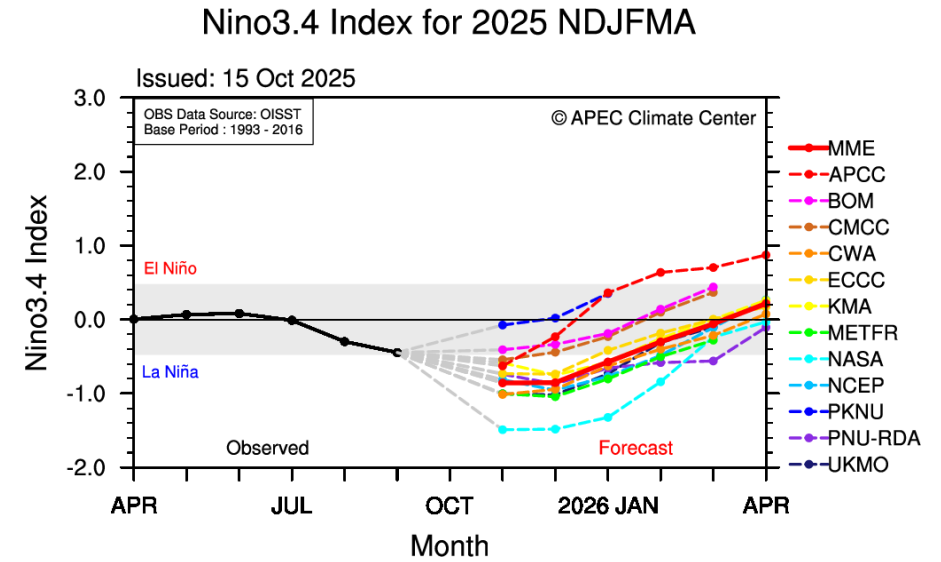
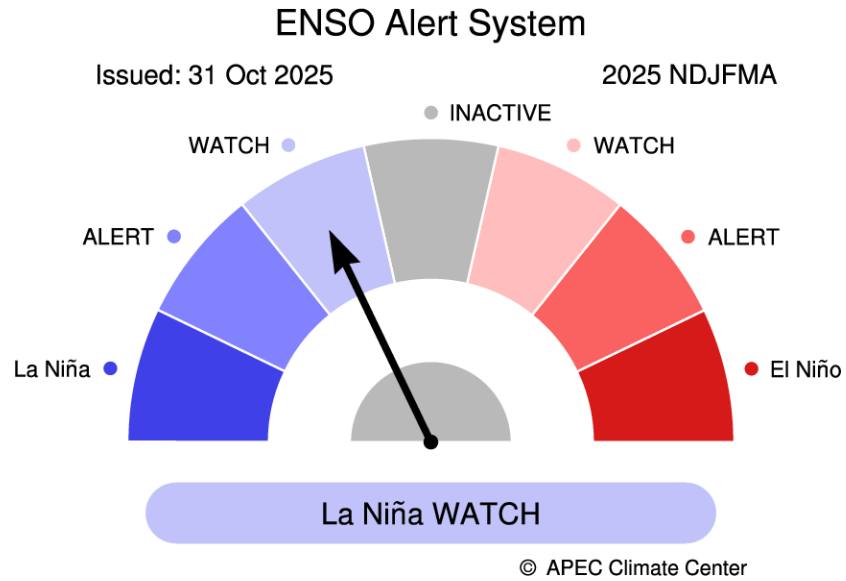


ANÁLISIS CLIMÁTICO

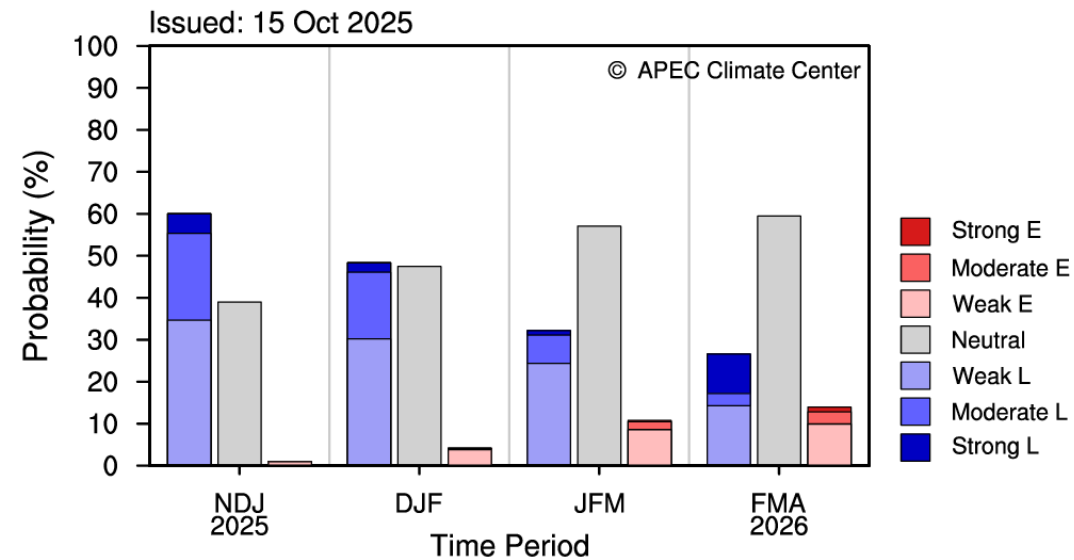
PRECIPITACIONES SEPTIEMBRE 2025







Probabilistic ENSO Forecast for 2025 NDJFMA

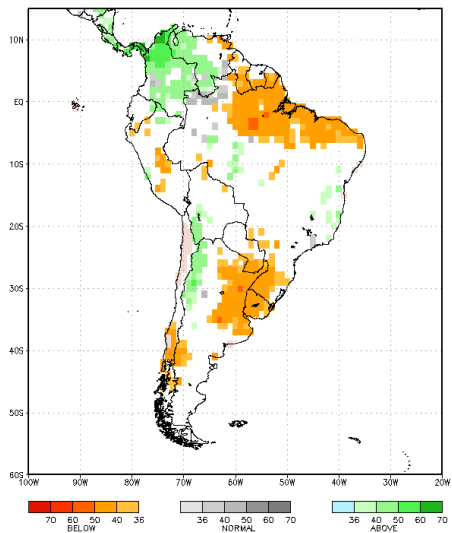


* ENSO Intensity based on 3M Mean Nino3.4 SST Anomaly (Category Boundaries: +/-1.5, 1.0, 0.5°C)

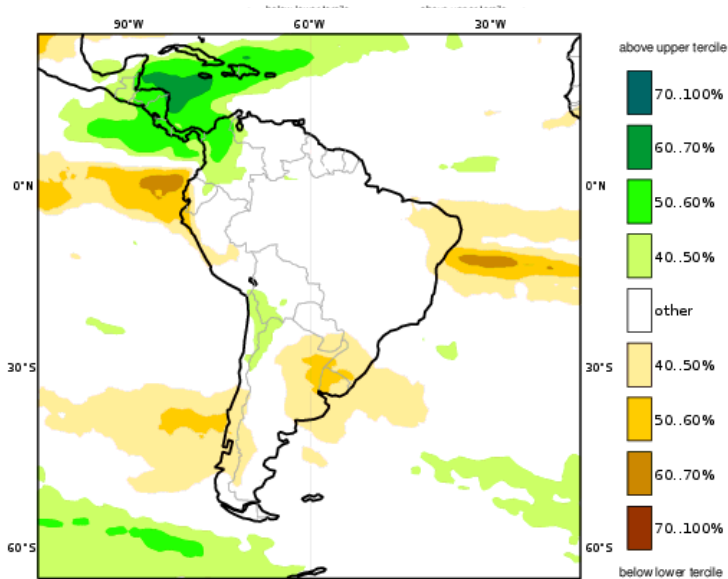
ANÁLISIS CLIMÁTICO

PREVISIÓN TRIMESTRAL DE LLUVIA NOV-DIC-ENE 25/26

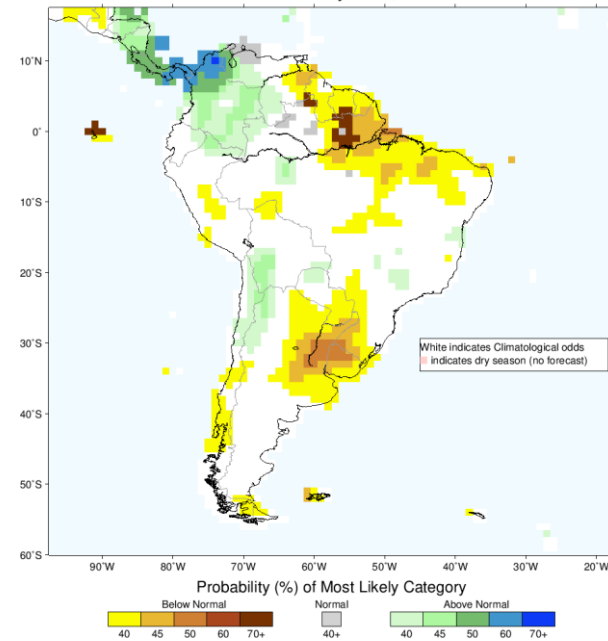
NMME Precip. Prob. OctIC Nov2025-Jan2026 Fcst Sand color: Nov-Jan DryClim Mask



C3S multi-system seasonal forecast ECMWF/Met Office/Météo-France/CMCC/DWD/NCEP/JMA/ECCC/BOM
 Prob(most likely category of precipitation) NDJ 2025/26
 Nominal forecast start: 01/10/25
 Unweighted mean

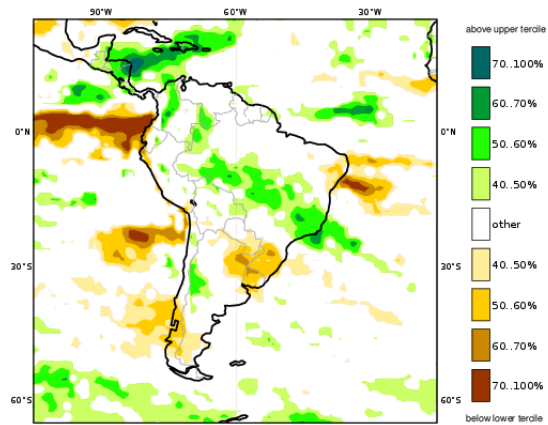


IRI Multi-Model Probability Forecast for Precipitation for November-December-January 2026, Issued October 2025



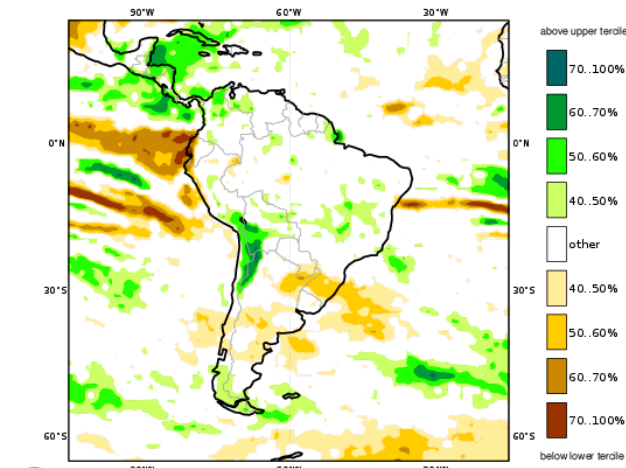
C3S: JMA contribution
 Prob(most likely category of precipitation) NDJ 2025/26
 Nominal forecast start: 01/10/25
 Ensemble size = 55, climate size = 240

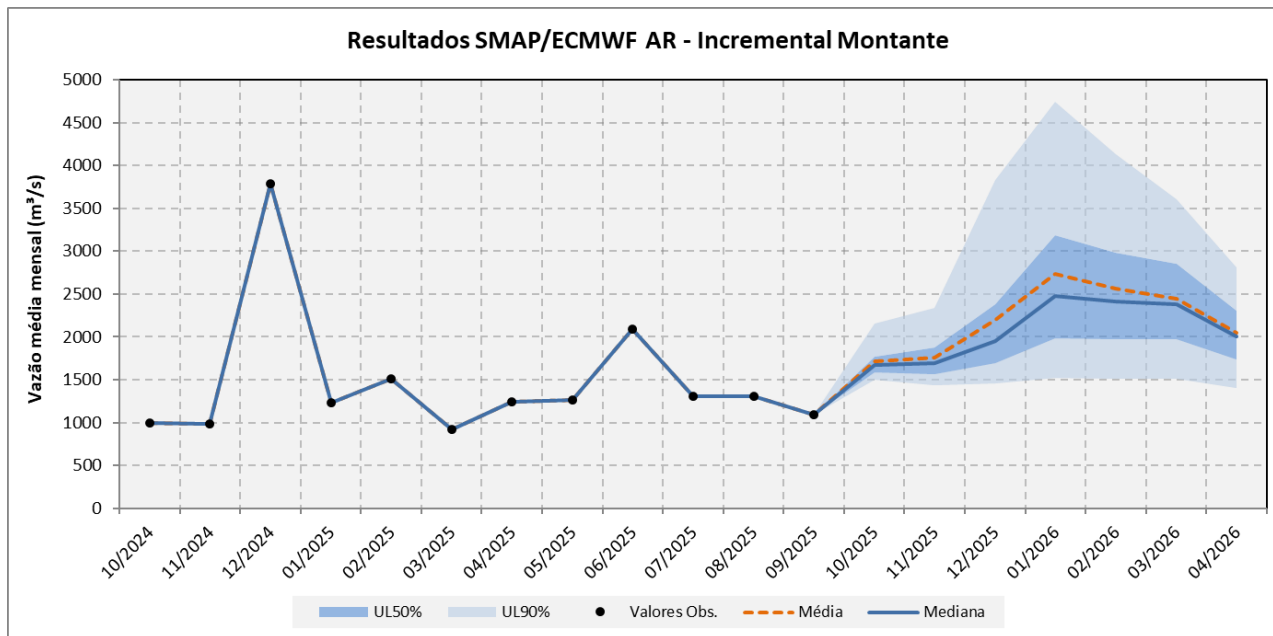
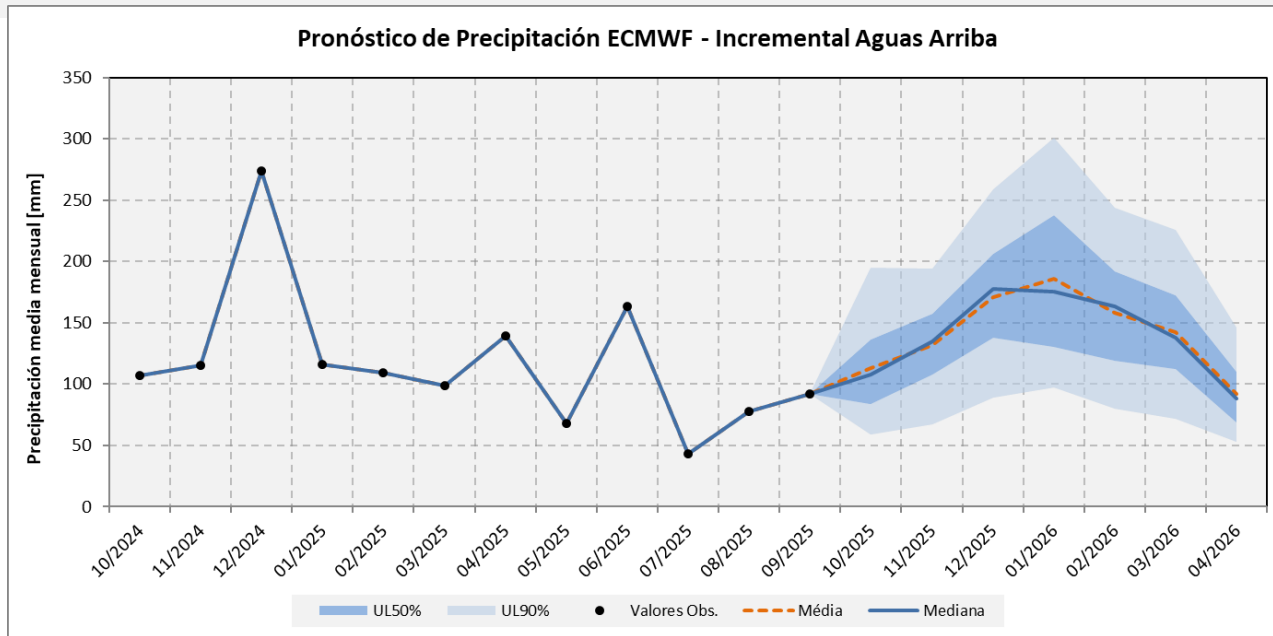
NDJ 2025/26

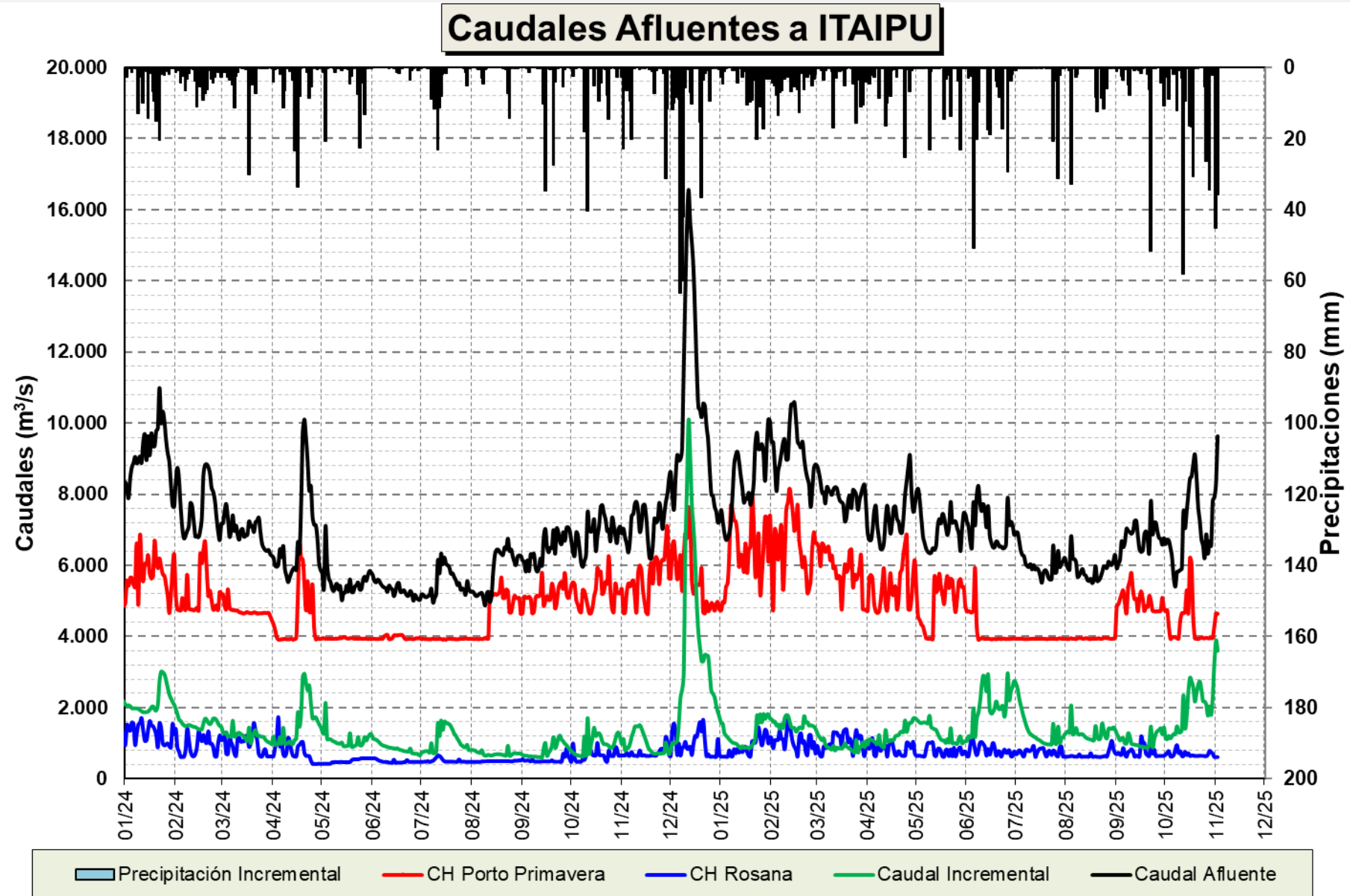


C3S: Météo-France contribution
 Prob(most likely category of precipitation) NDJ 2025/26
 Nominal forecast start: 01/10/25
 Ensemble size = 51, climate size = 744

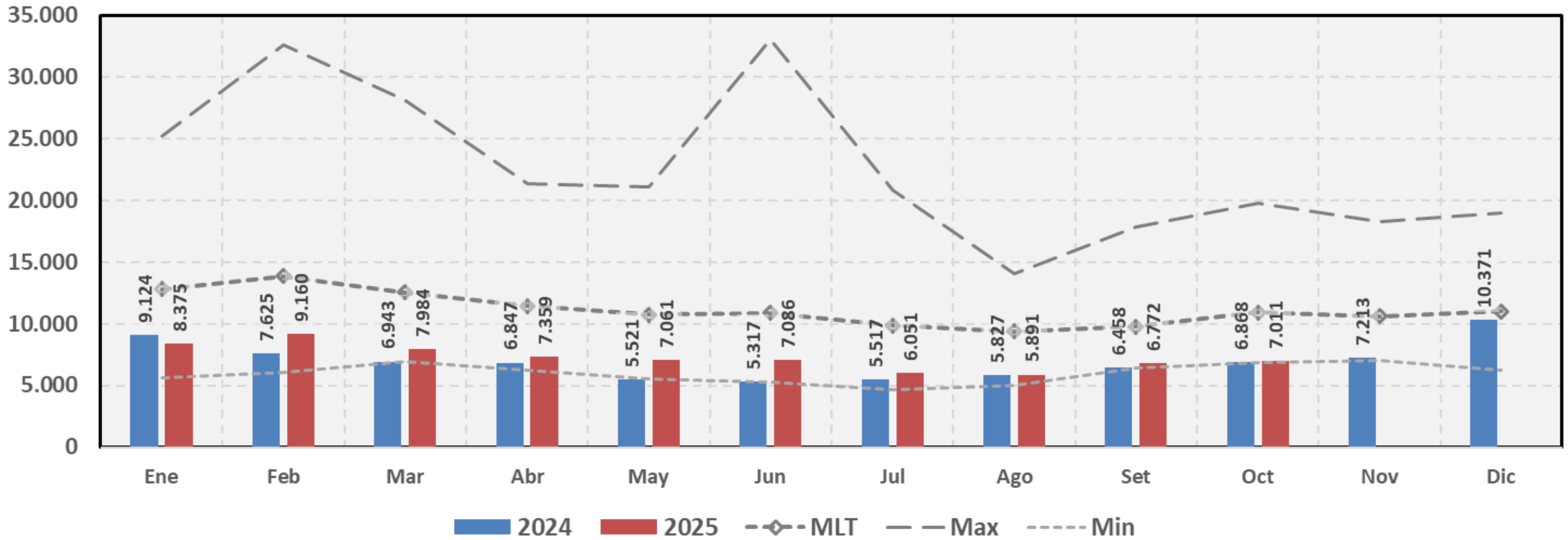
NDJ 2025/26



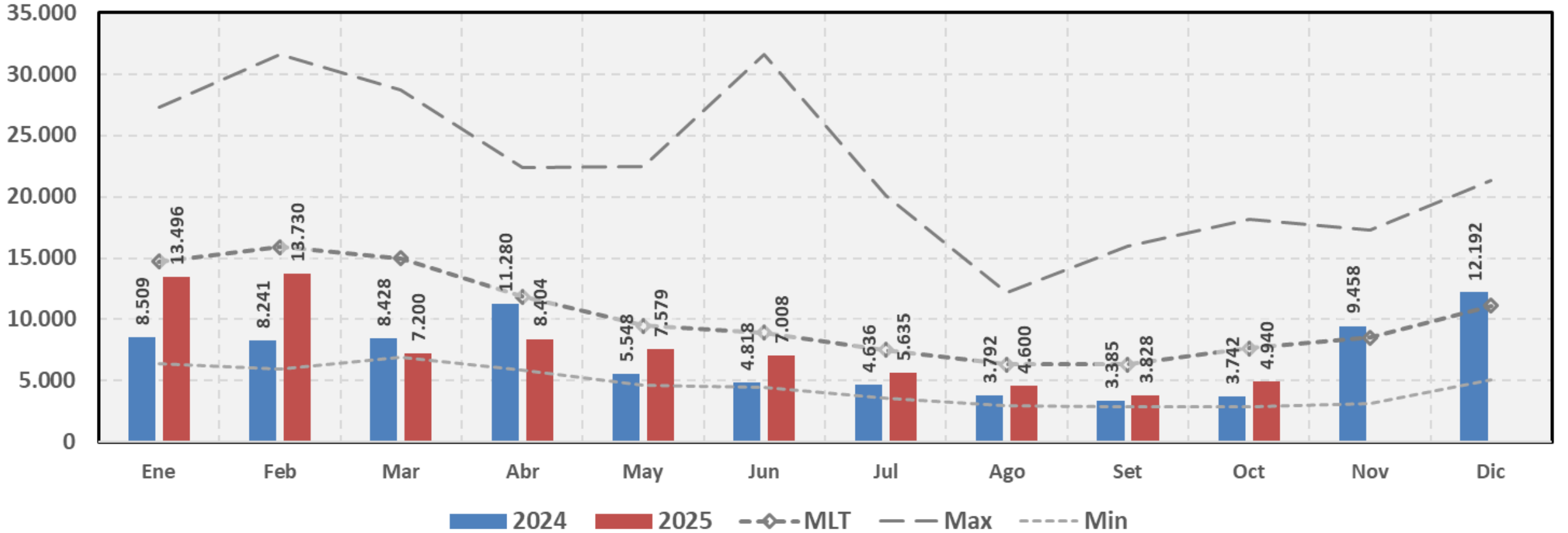




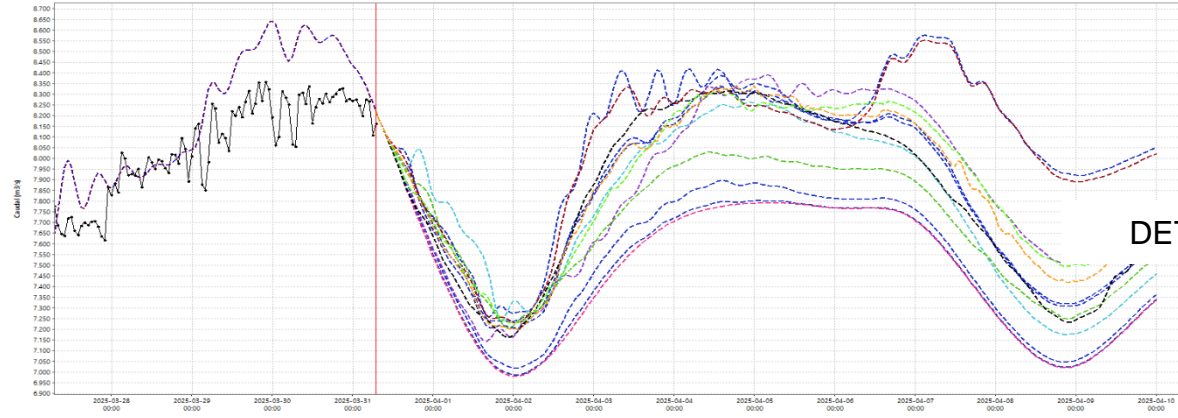
Afluencia a Itaipu



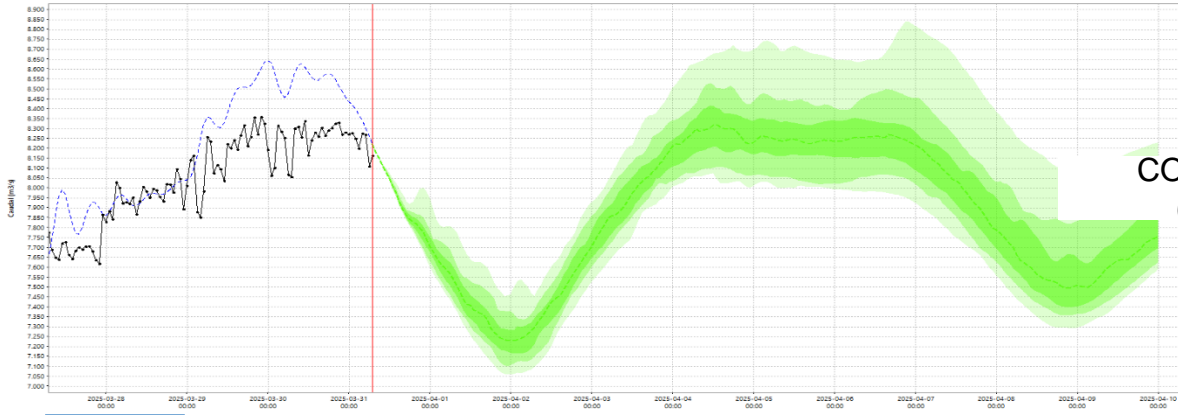
Caudal Natural - Itaipu (ONS)



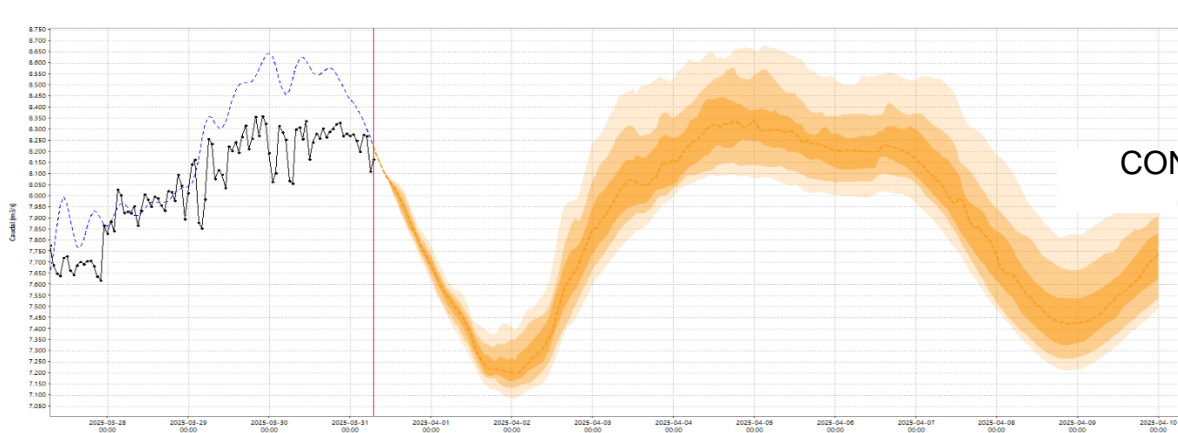
PREVISIÓN ABRIL 2025 HMS



DETERMINÍSTICOS

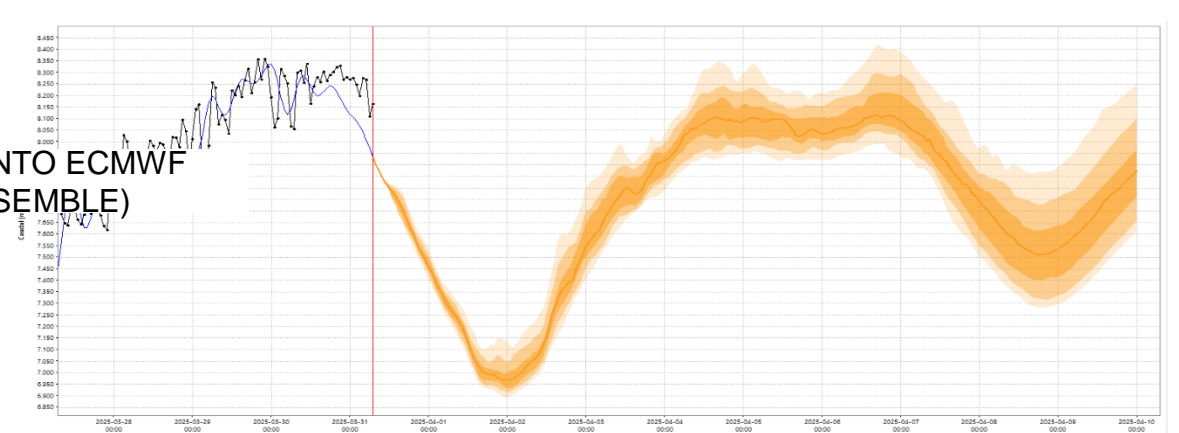
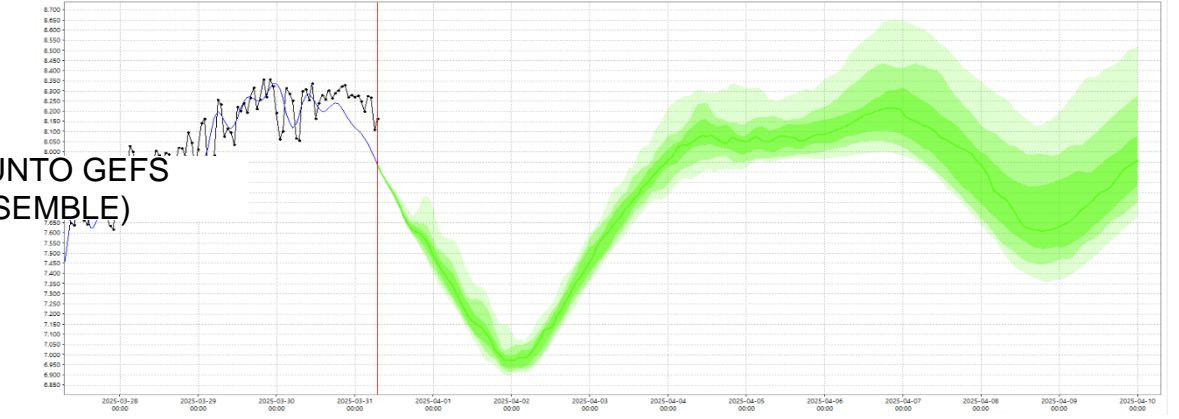
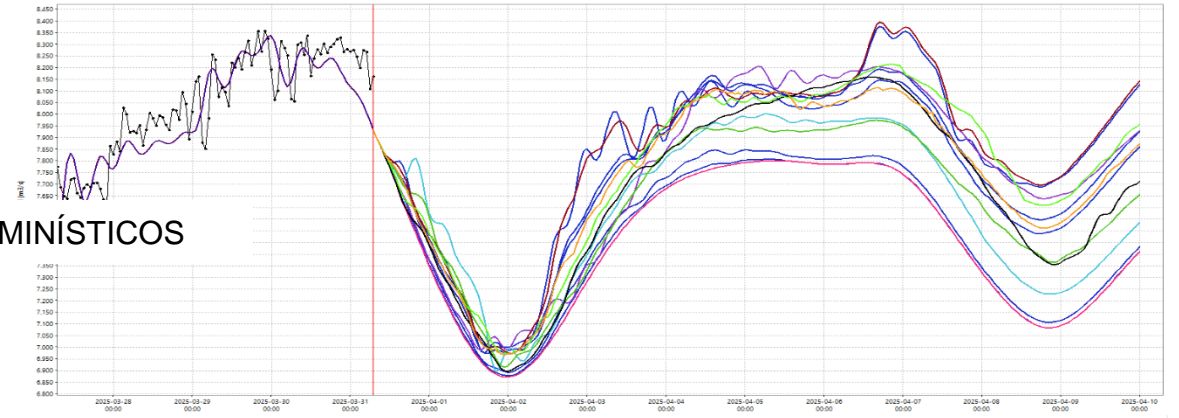


CONJUNTO GEFS
(ENSEMBLE)

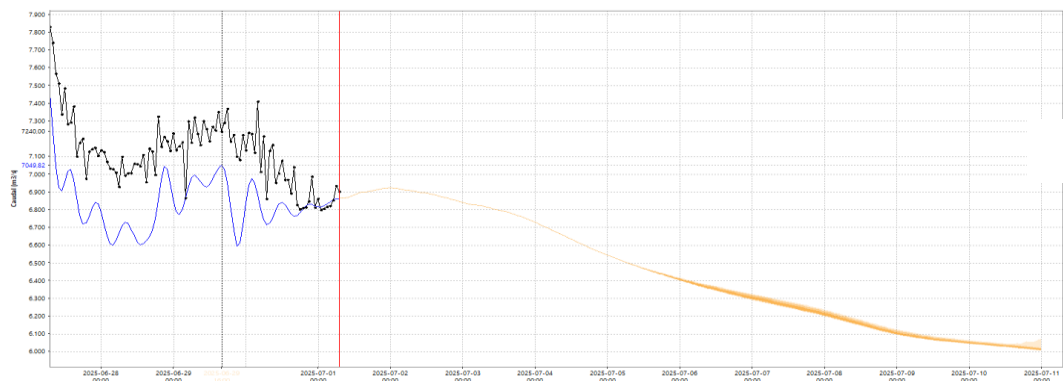
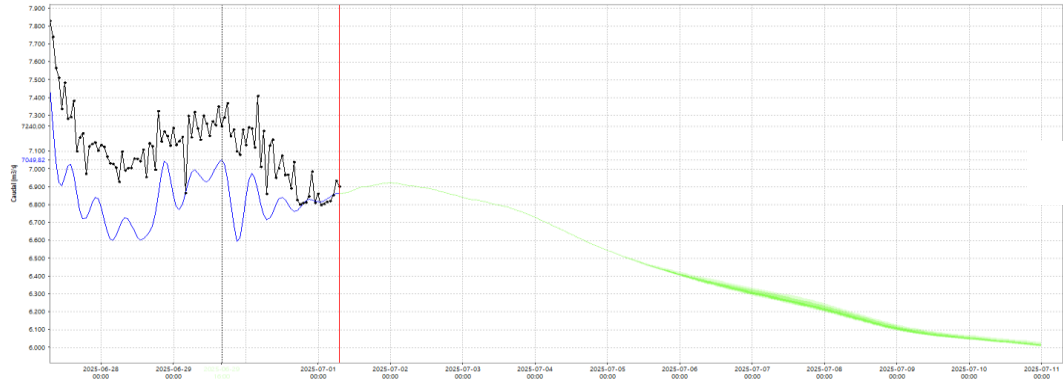
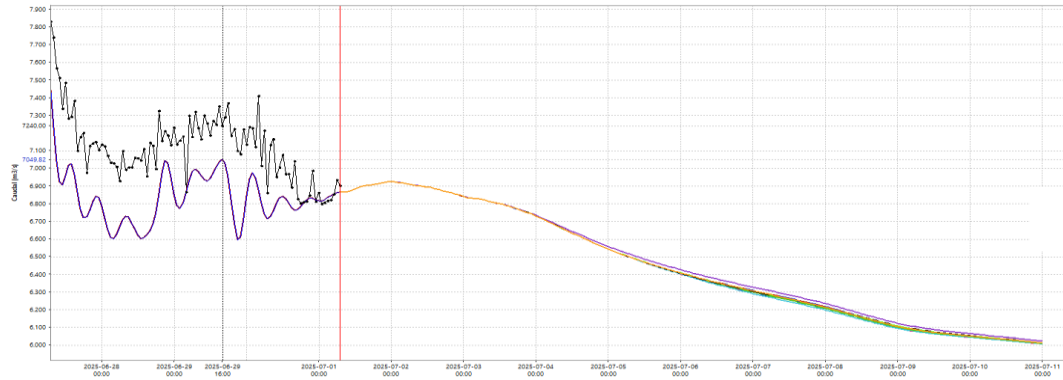


CONJUNTO ECMWF
(ENSEMBLE)

PREVISIÓN DE CAUDALES AGUAS ARRIBA MGB

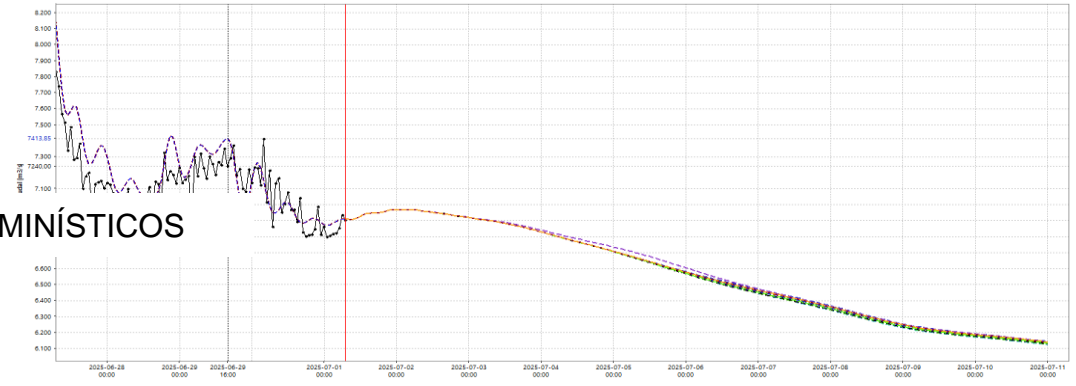


PREVISIÓN JULIO 2025 HMS

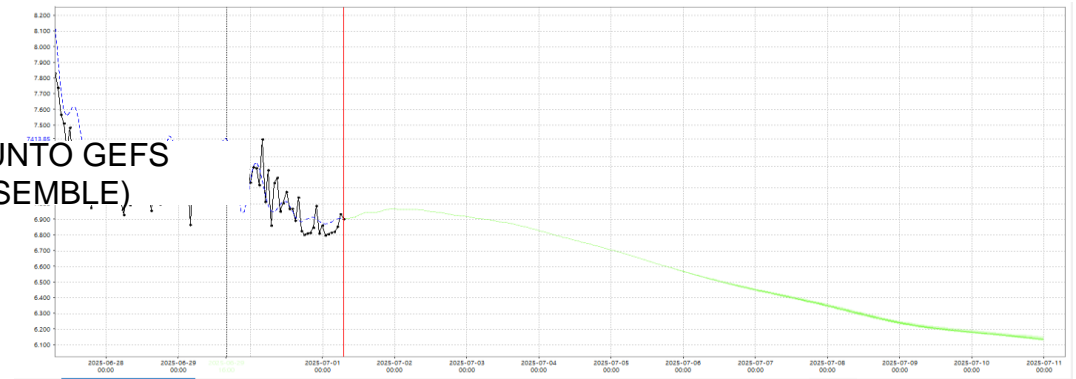


PREVISIÓN DE CAUDALES AGUAS ARRIBA MGB

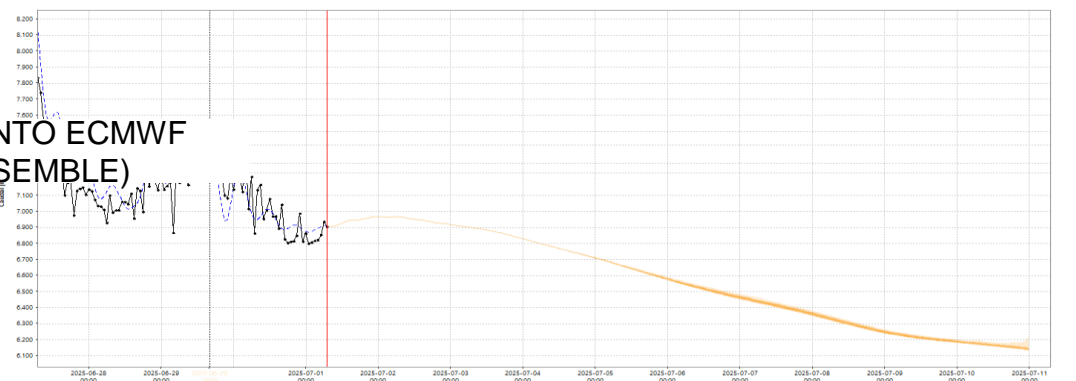
DETERMINÍSTICOS



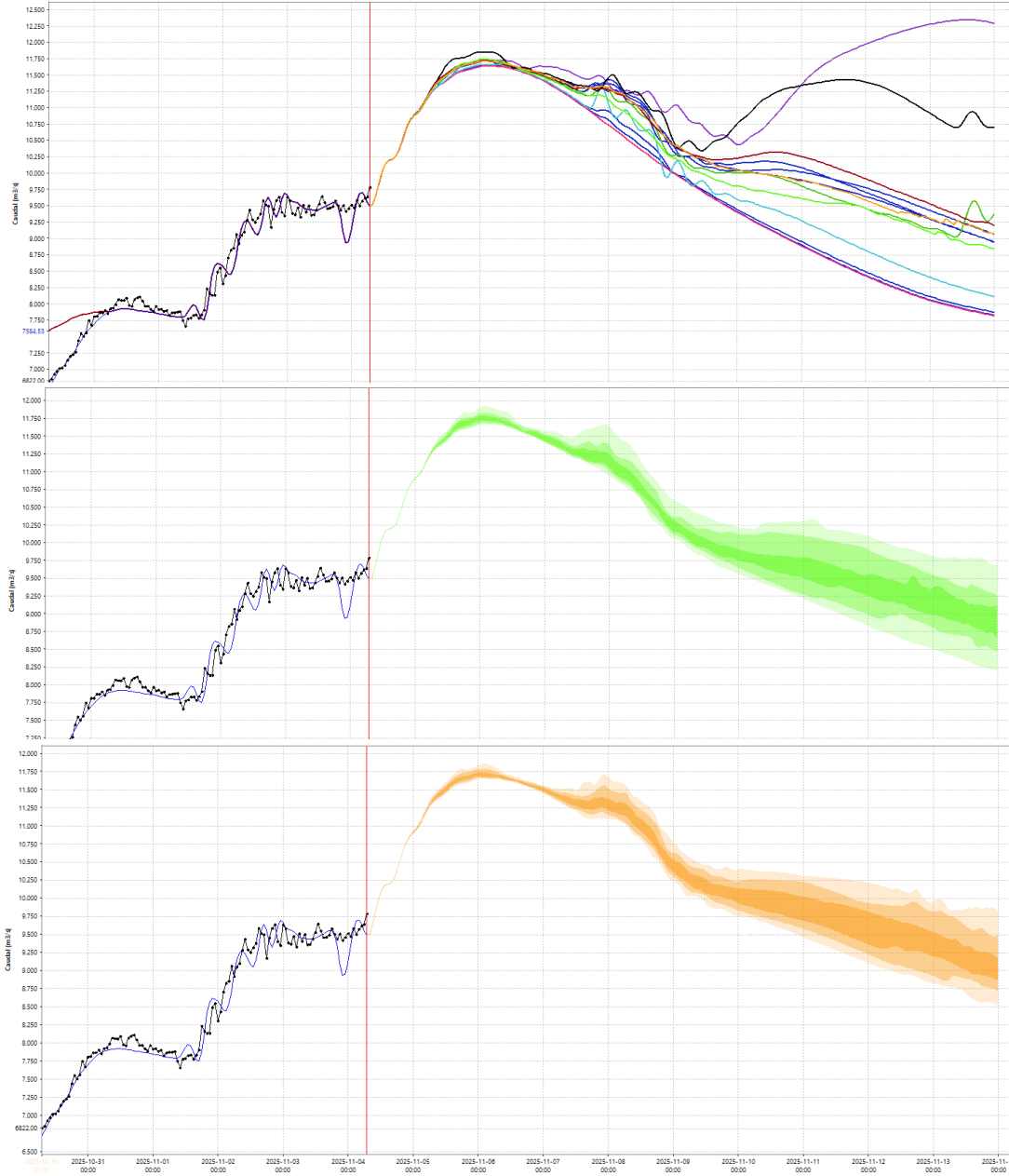
CONJUNTO GEFS
(ENSEMBLE)



CONJUNTO ECMWF
(ENSEMBLE)



PREVISIÓN NOVIEMBRE 2025 HMS

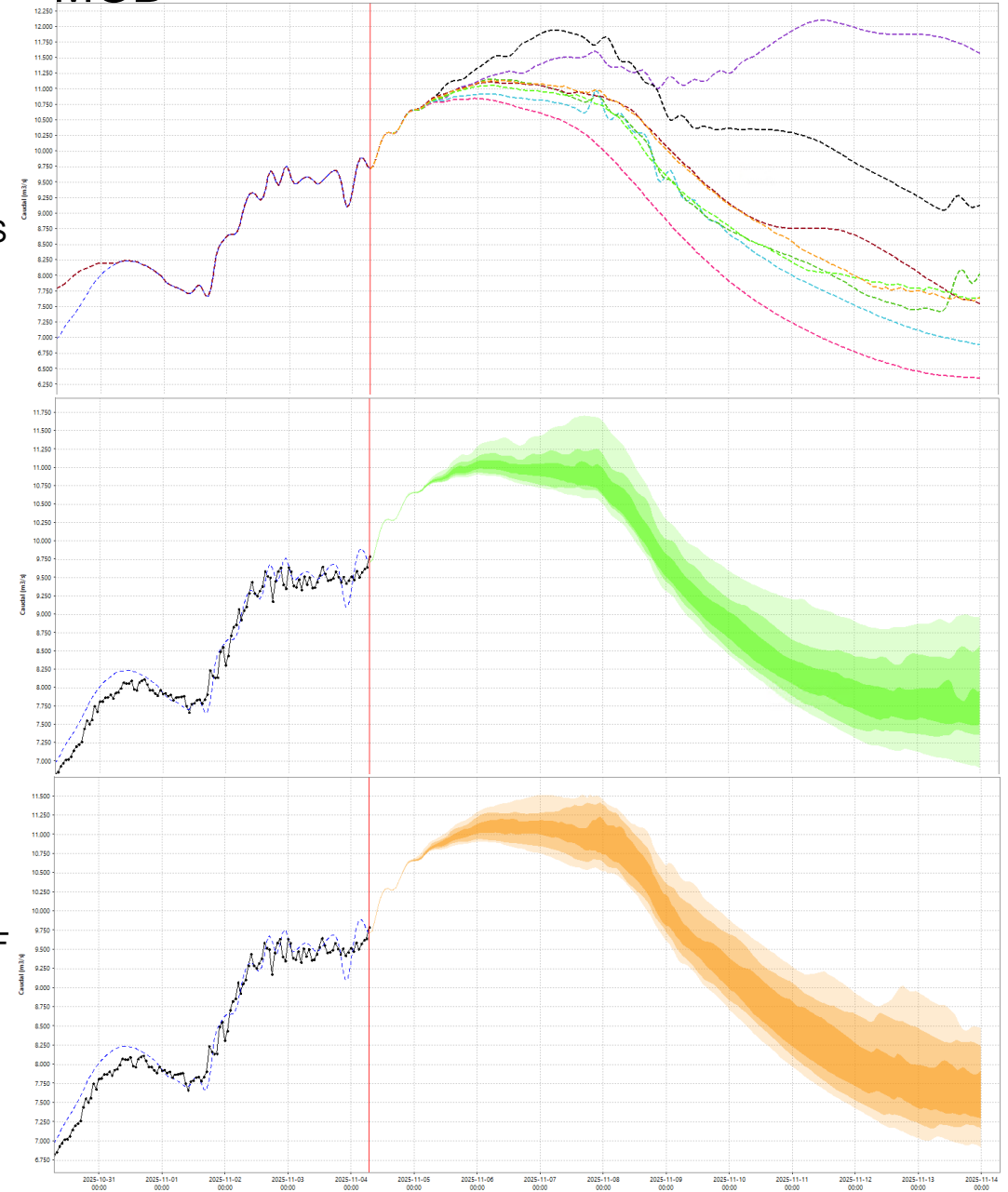


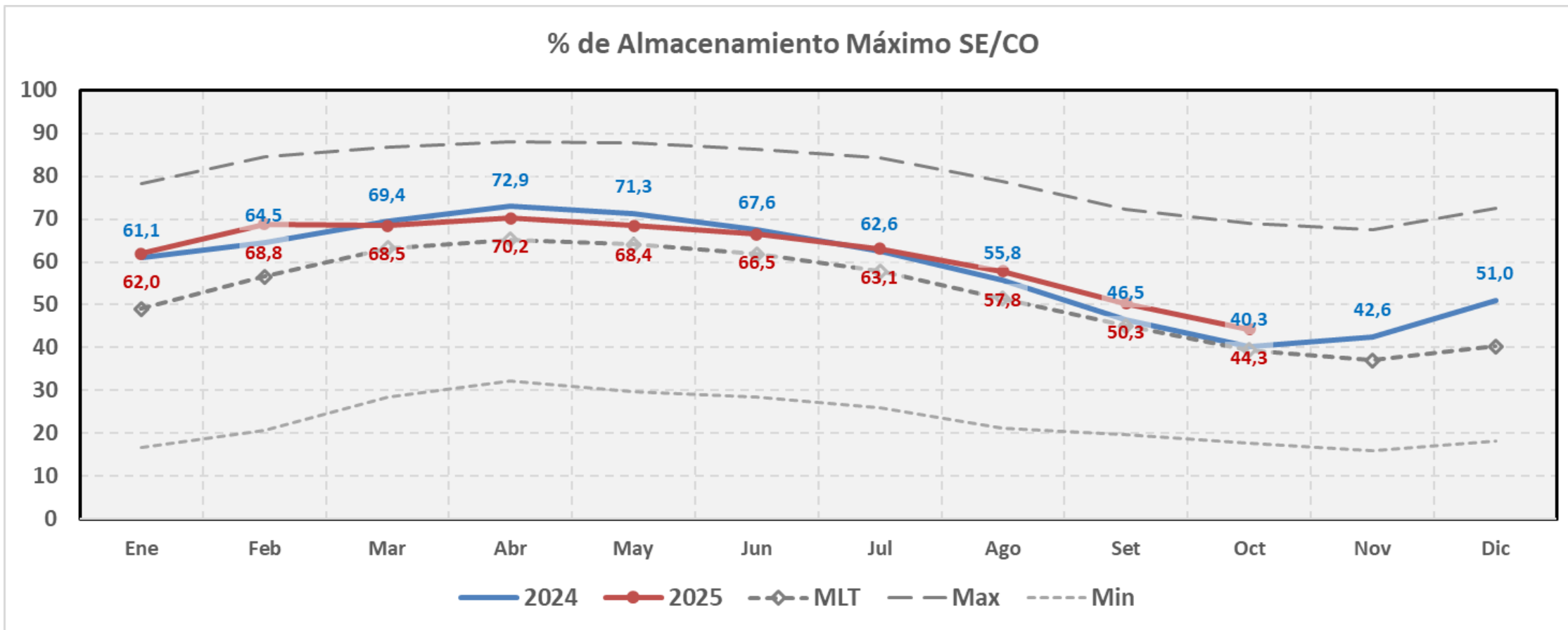
DETERMINÍSTICOS

CONJUNTO GEFS
(ENSEMBLE)

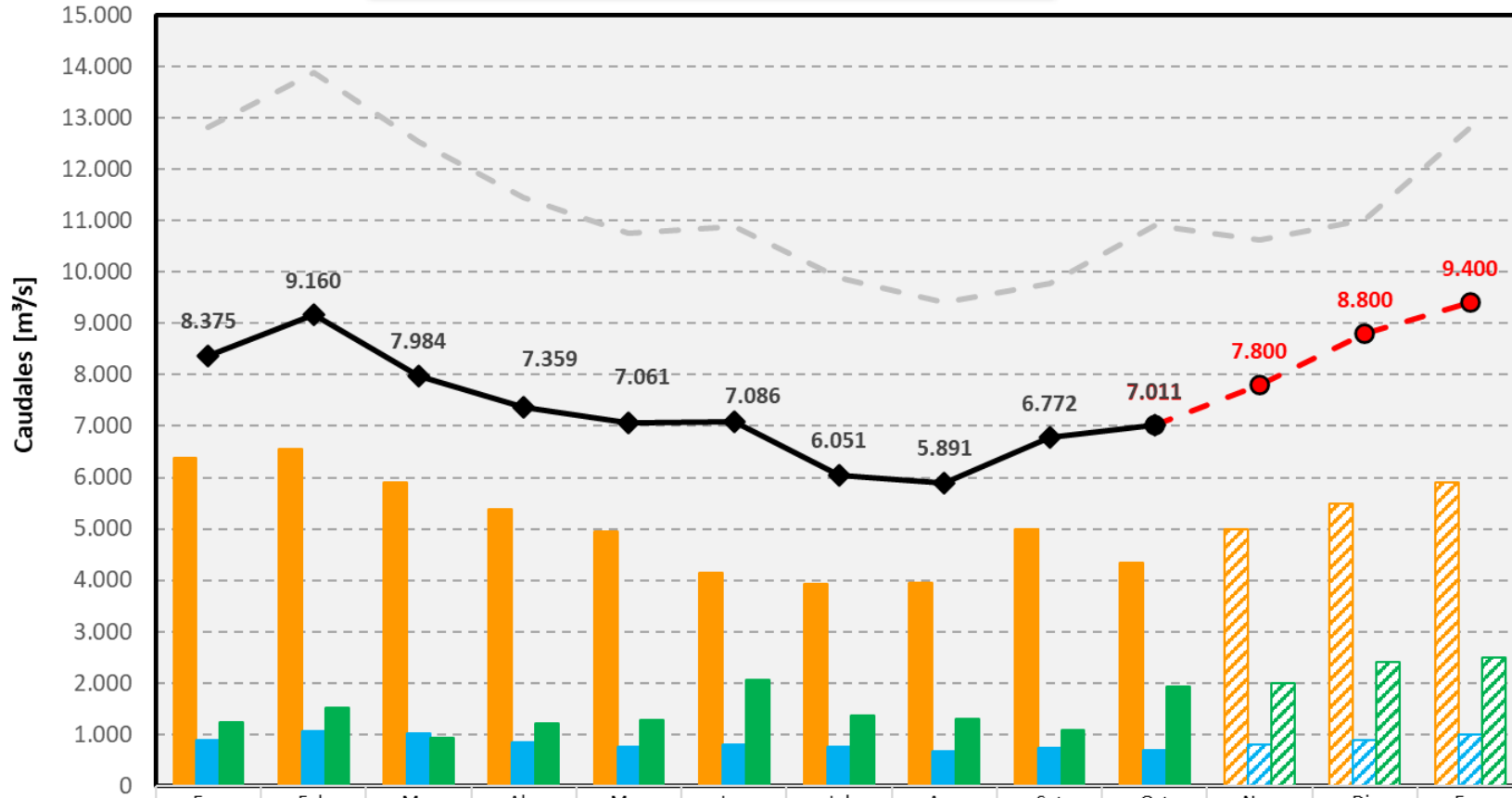
CONJUNTO ECMWF
(ENSEMBLE)

PREVISIÓN DE CAUDALES AGUAS ARRIBA MGB



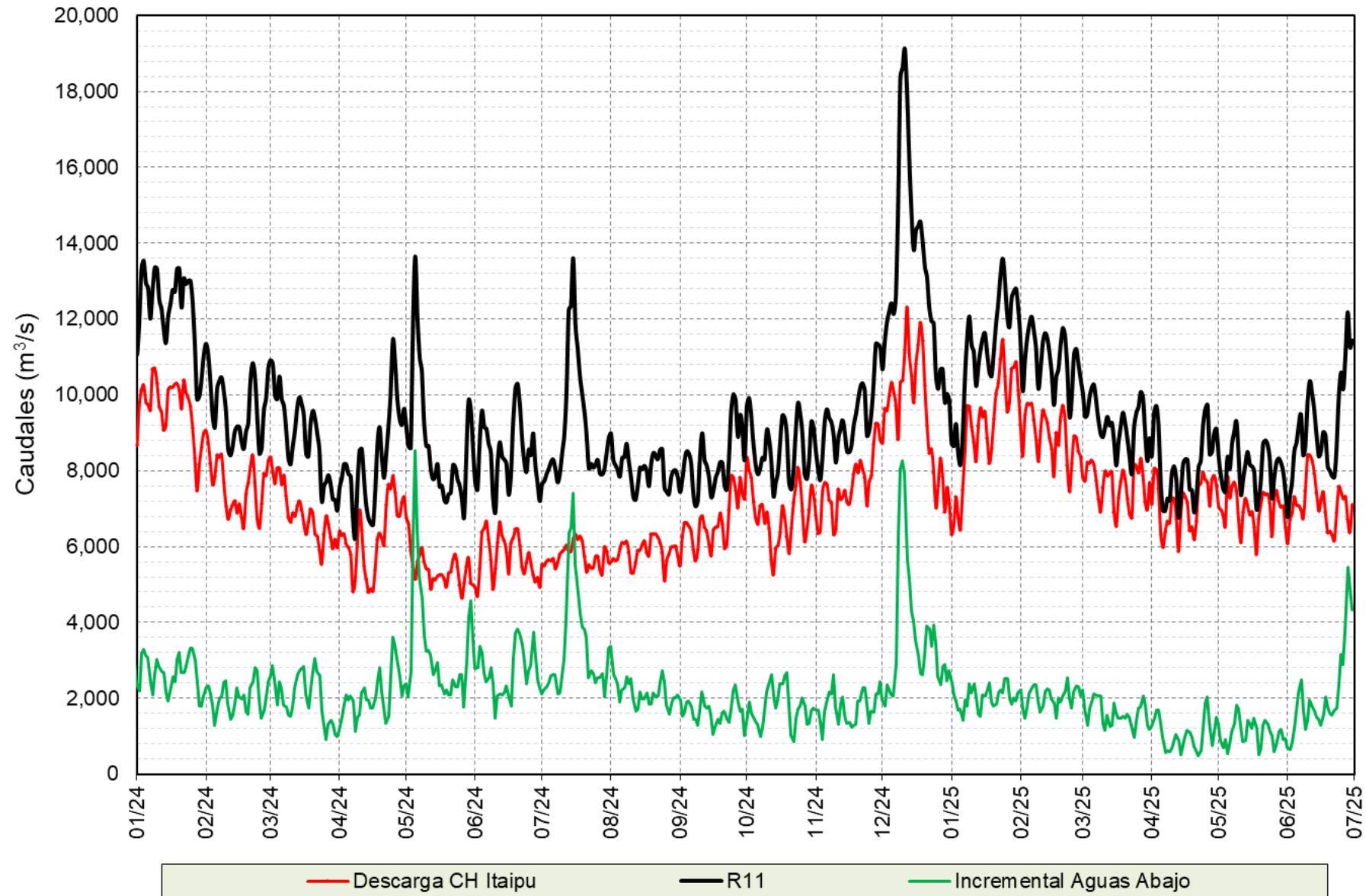


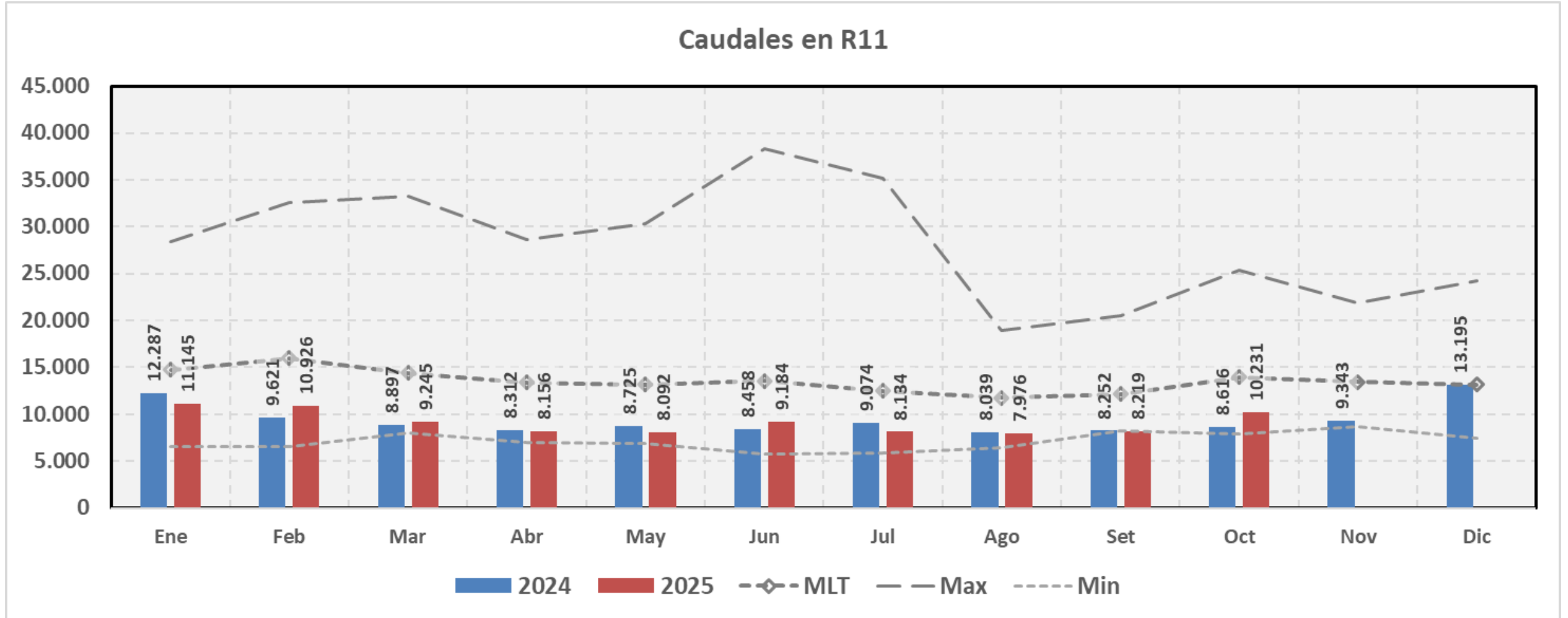
CAUDALES AFLUENTES A ITAIPIU - AÑO 2025



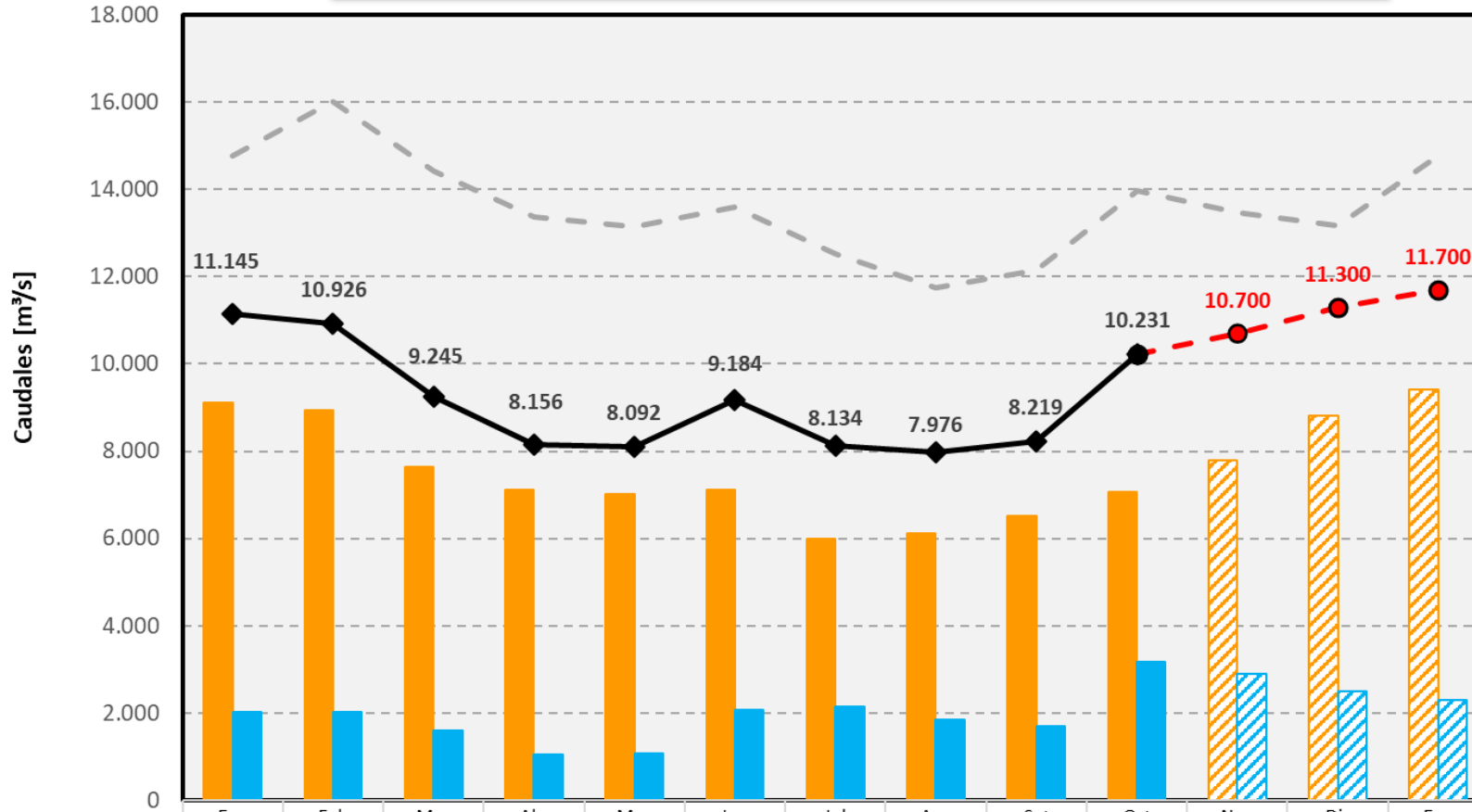
	Ene	Feb	Mar	Abr	May	Jun	Jul	Ago	Set	Oct	Nov	Dic	Ene
CH Primavera	6.372	6.561	5.893	5.379	4.951	4.140	3.935	3.942	4.993	4.335	5.000	5.500	5.900
CH Rosana	891	1.068	1.030	846	763	807	754	667	740	691	800	900	1.000
Q Incremental	1.246	1.528	928	1.219	1.285	2.057	1.357	1.293	1.096	1.935	2.000	2.400	2.500
Previsión de Afluencia										7.011	7.800	8.800	9.400
Afluencia Observada	8.375	9.160	7.984	7.359	7.061	7.086	6.051	5.891	6.772	7.011			
Promedio 1983/2024	12.808	13.885	12.539	11.457	10.751	10.880	9.877	9.400	9.783	10.911	10.626	11.008	12.808






Caudales rio Paraná - Aguas Abajo





CAUDALES PROMEDIOS MENSUALES EN LA ESTACIÓN R11 - AÑO 2025



 Descargas ITAIPU	9.122	8.926	7.644	7.109	7.011	7.105	5.987	6.121	6.510	7.070	7.800	8.800	9.400
 Incremental R11	2.023	2.031	1.601	1.047	1.081	2.079	2.146	1.855	1.709	3.160	2.900	2.500	2.300
 Caudales R11 Previstos										10.231	10.700	11.300	11.700
 Caudales R11 Observados	11.145	10.926	9.245	8.156	8.092	9.184	8.134	7.976	8.219	10.231			
 Promedio 1983/2024	14.768	16.010	14.425	13.377	13.149	13.585	12.515	11.745	12.155	13.964	13.472	13.171	14.768



¡GRACIAS!

OPSH.DT



DIRECCIÓN TÉCNICA
DIVISIÓN DE ESTUDIOS
HIDROLÓGICOS Y ENERGÉTICOS