

# I FORO HIDROCLIMÁTICO NACIONAL 2026

Asunción  
26 de Marzo de 2026

**OPSH.DT- División de Estudios Hidrológicos y Energéticos**

OPS.DT - Departamento de Operación del Sistema

OP.DT - Superintendencia de Operación

DT - Dirección Técnica



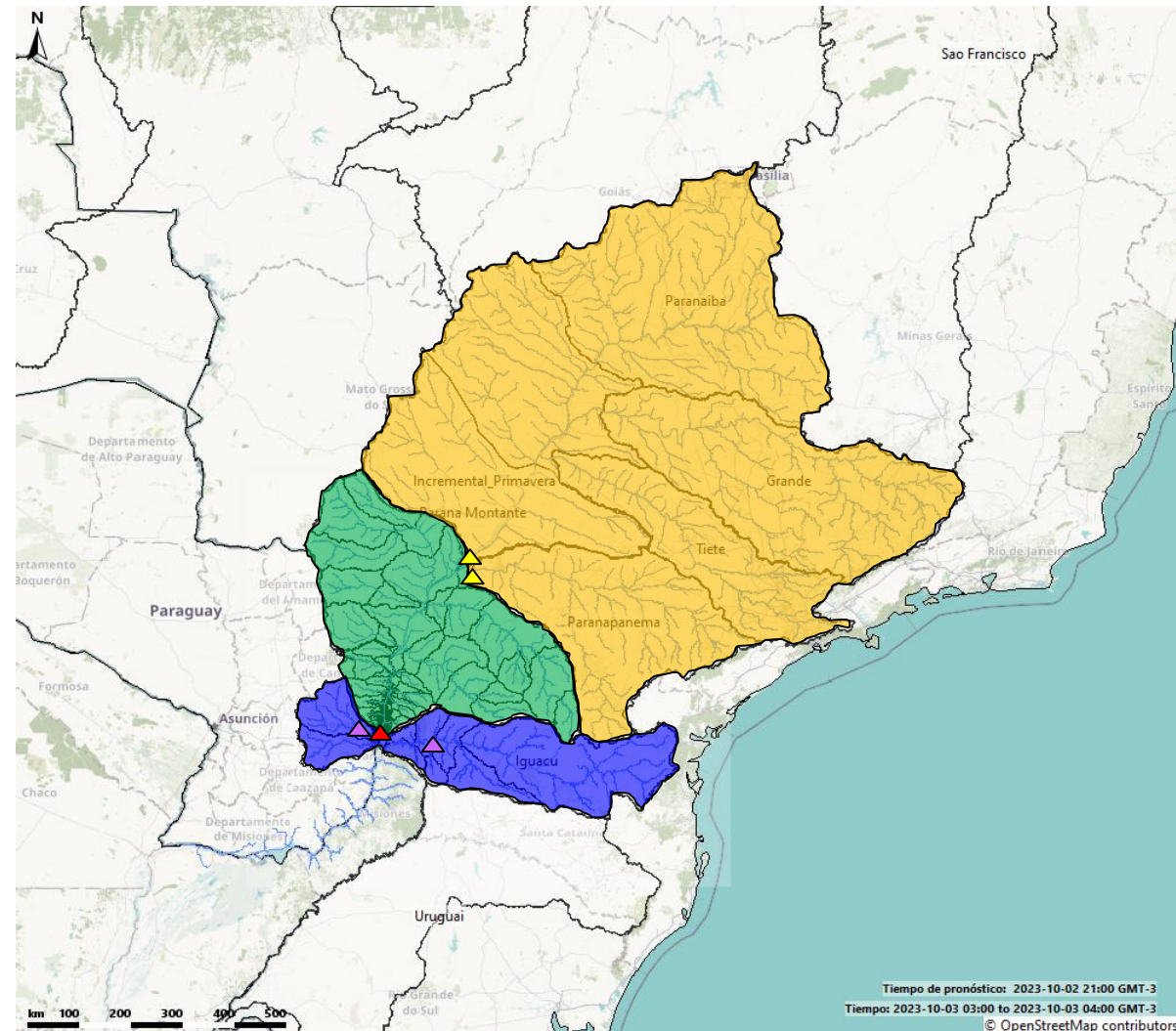
# SISTEMA HÍDRICO DE ITAIPU

## AGUAS ARRIBA

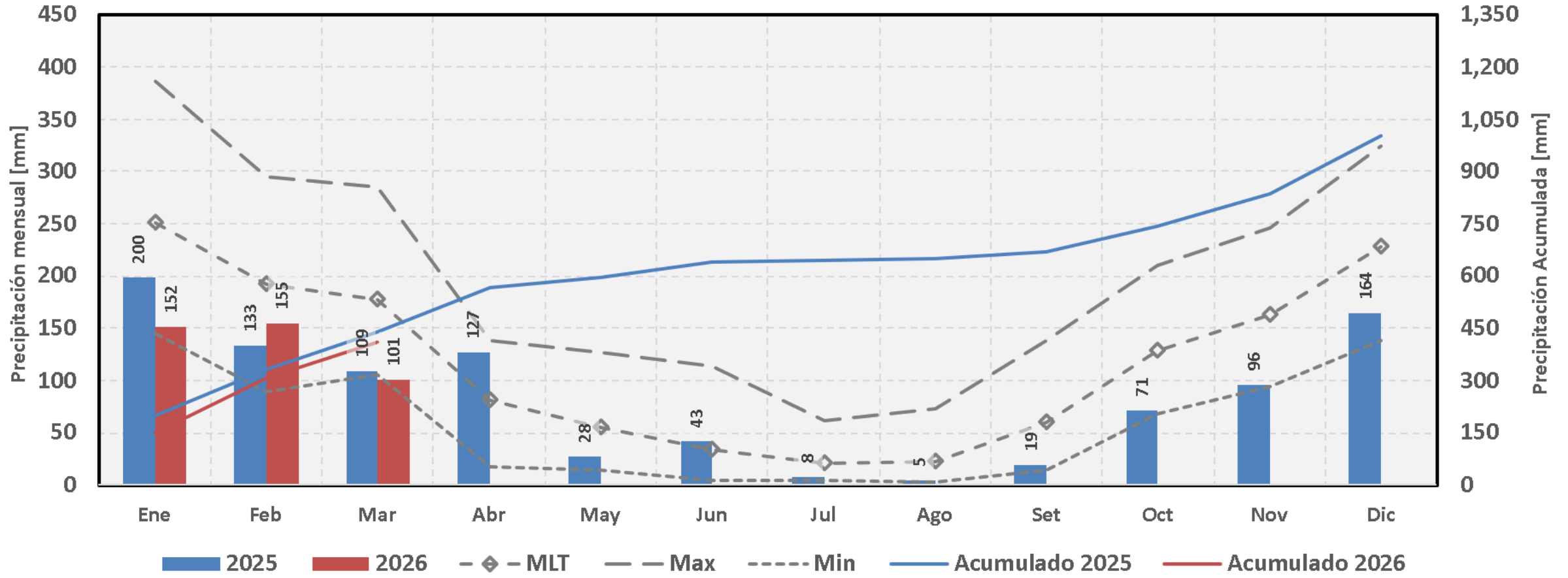
- CUENCA ALTA
  - Ríos formadores del río Paraná (Grande y Paranaíba)
  - Ríos tributarios al río Paraná (Tiete y Paranapanema)
  - Caudales Regulados (+ 50 Centrales)
  - Desembocadura: CH Porto Primavera y Rosana
- CUENCA INCREMENTAL
  - Ríos tributarios: Piquirí, Ivaí, Ivinhema, Amambaí e Iguatemi.
  - Caudales en estado natural
  - Desembocadura: CH Itaipu

## AGUAS ABAJO

- CUENCA RÍO IGUAÇU
  - Caudales regulados (6 Centrales).
  - Desembocadura: CH Baixo Iguaçu
- CUENCAS MARGEN DERECHA
  - Río Monday
  - Río Acaray – Desembocadura CH Acaray



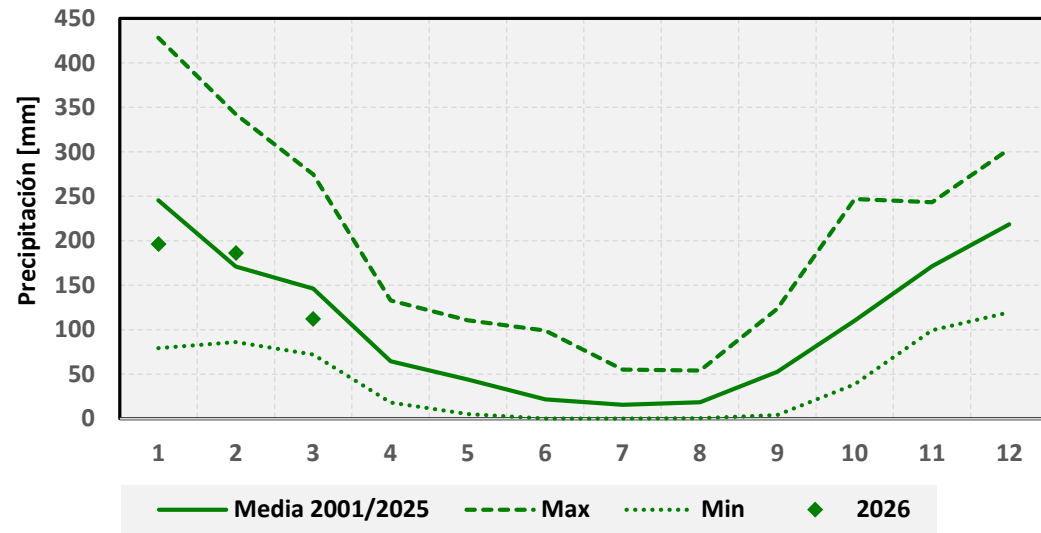
## Precipitación Paraná Aguas Arriba - acumulado mensual (CHIRPS)



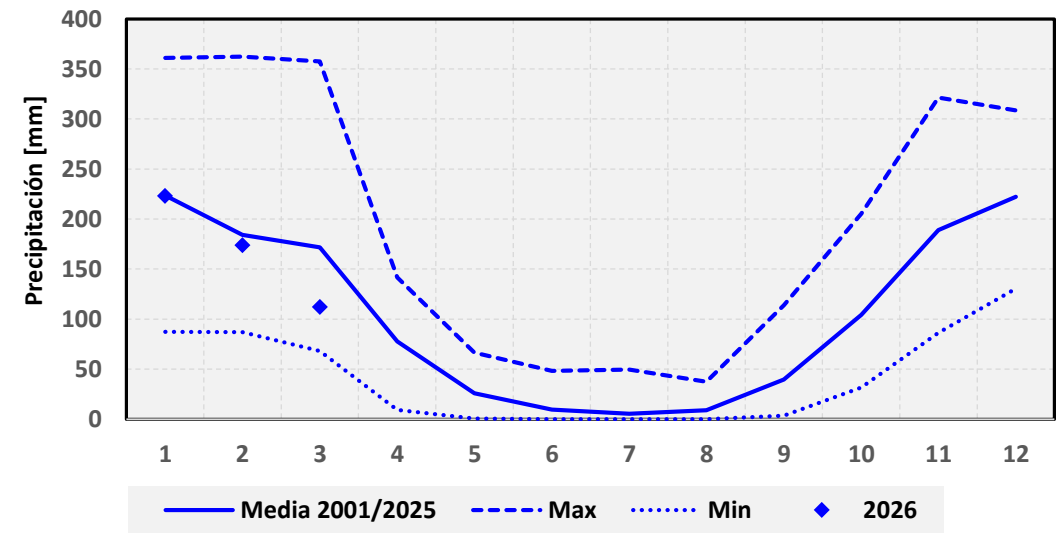
# ANÁLISIS CLIMÁTICO

# PRECIPITACIONES REGISTRADAS

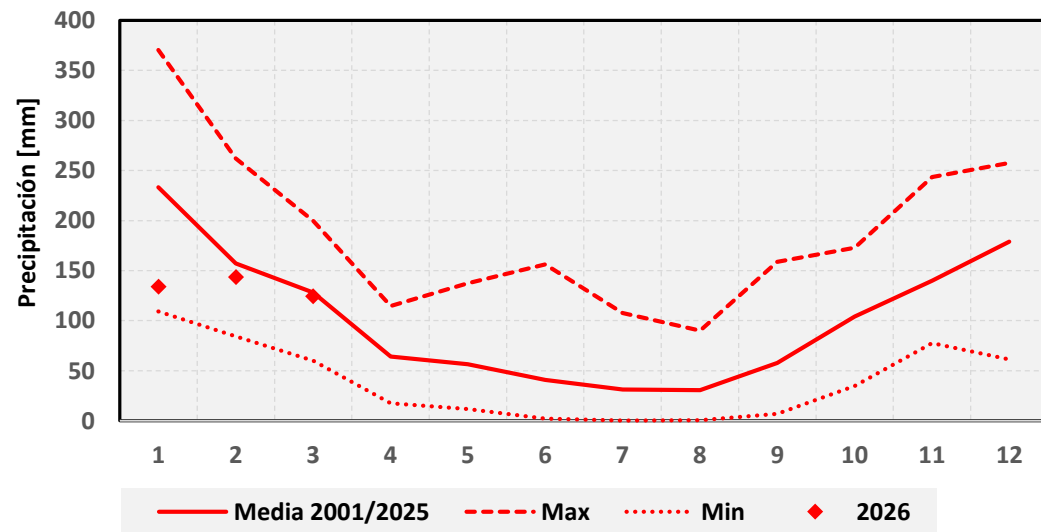
### Precipitación río Grande - MERGE/CPTEC



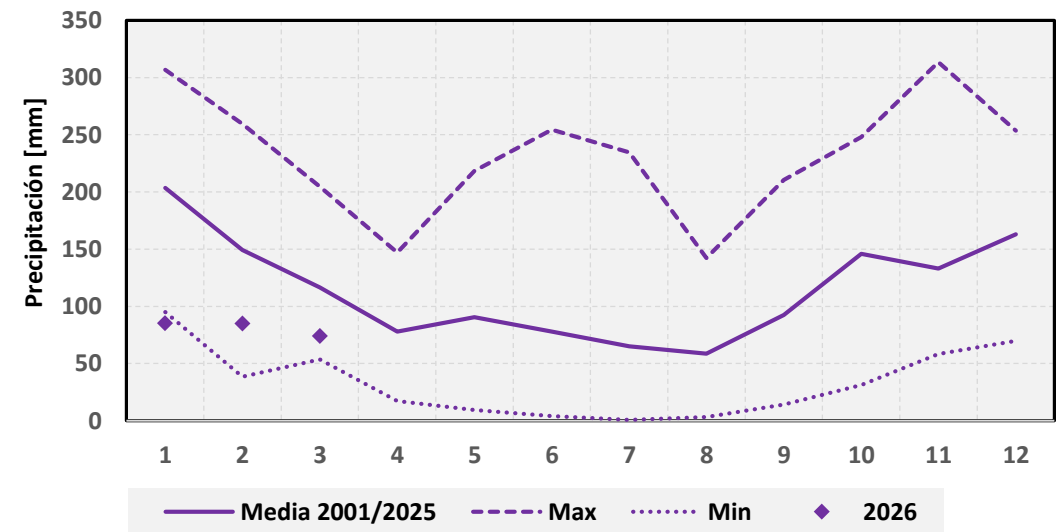
### Precipitación río Paranaíba - MERGE/CPTEC



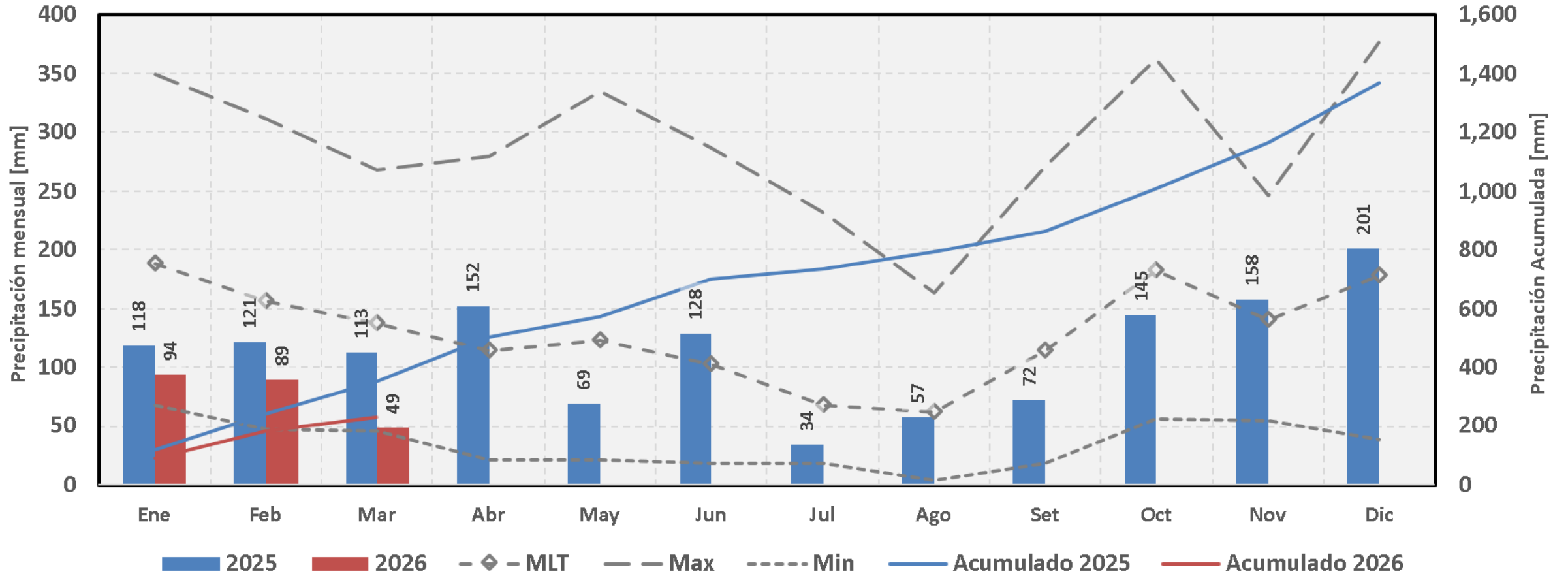
### Precipitación río Tiete - MERGE/CPTEC

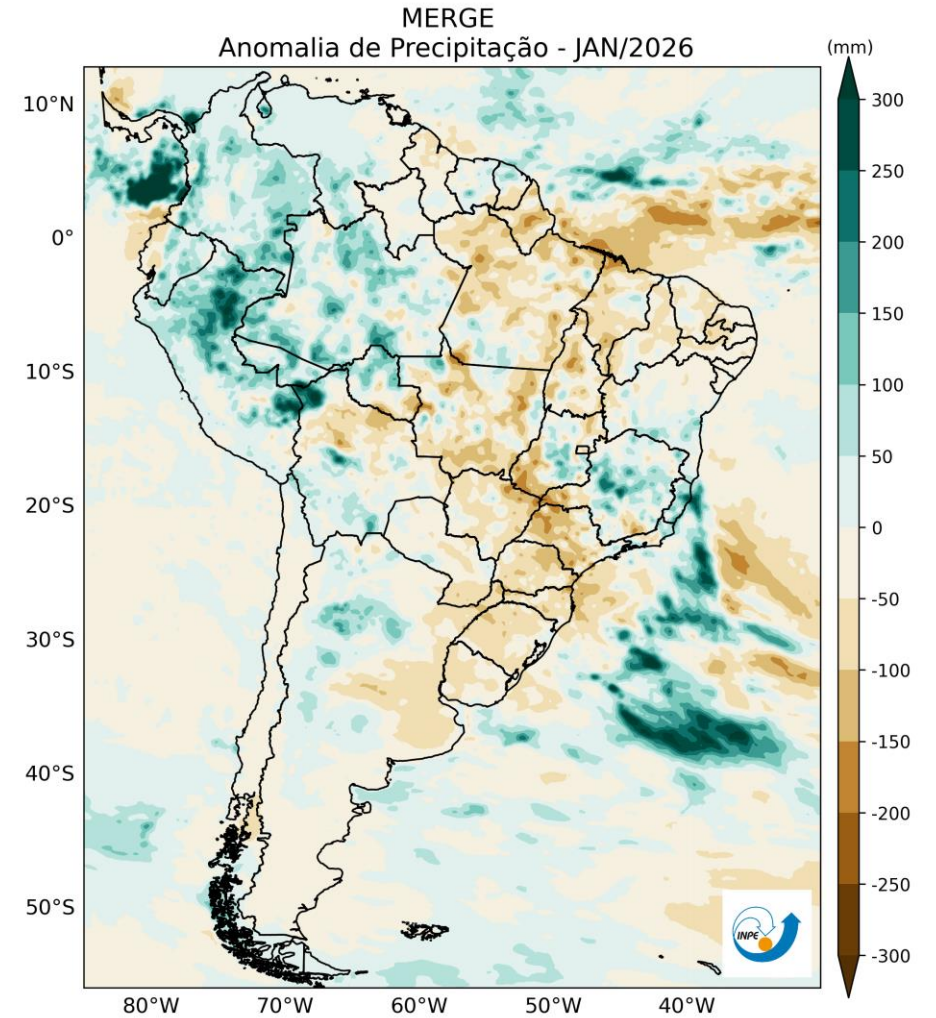
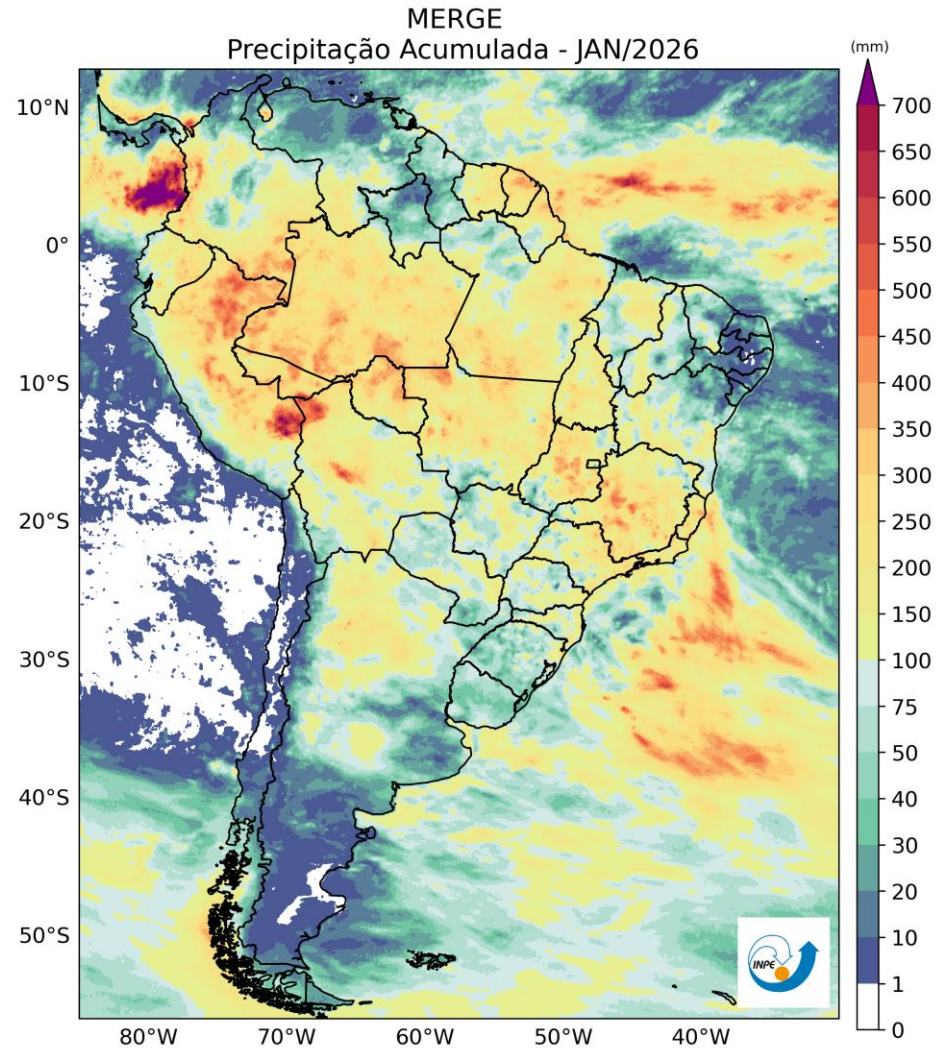


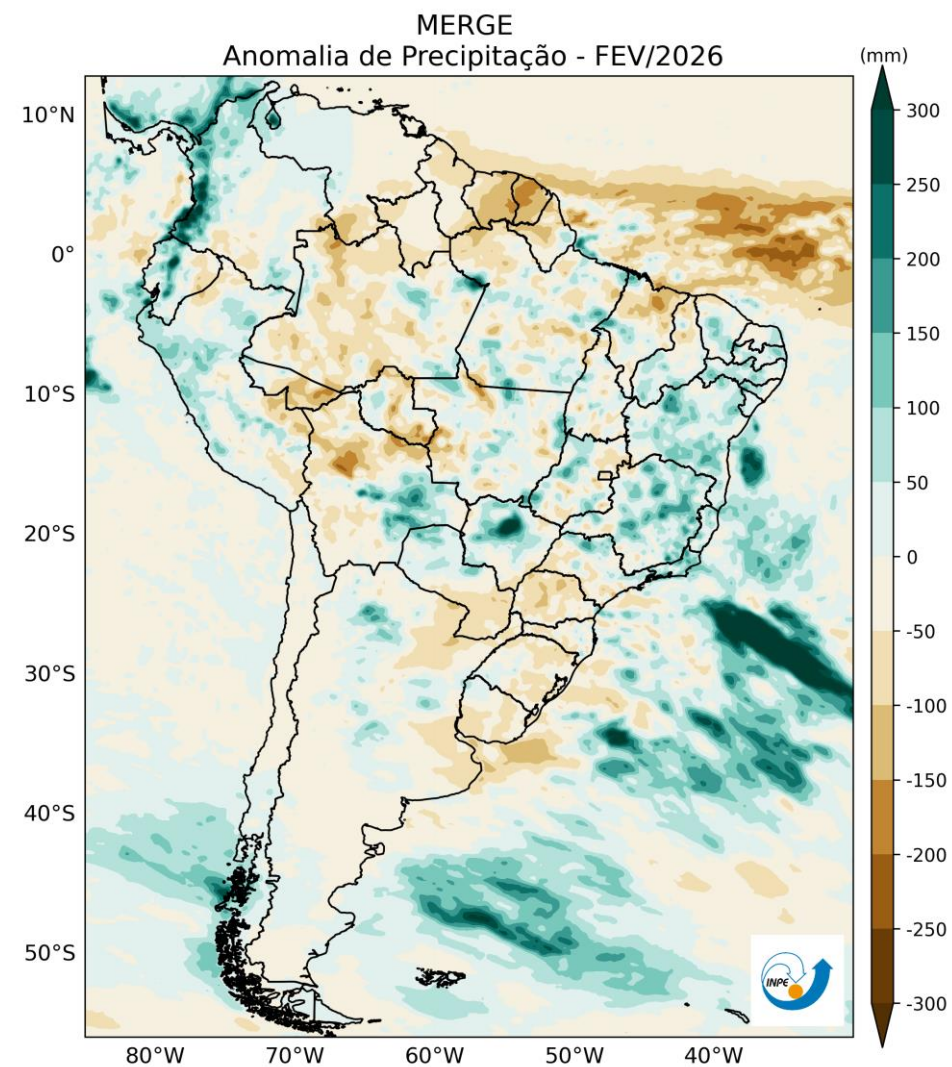
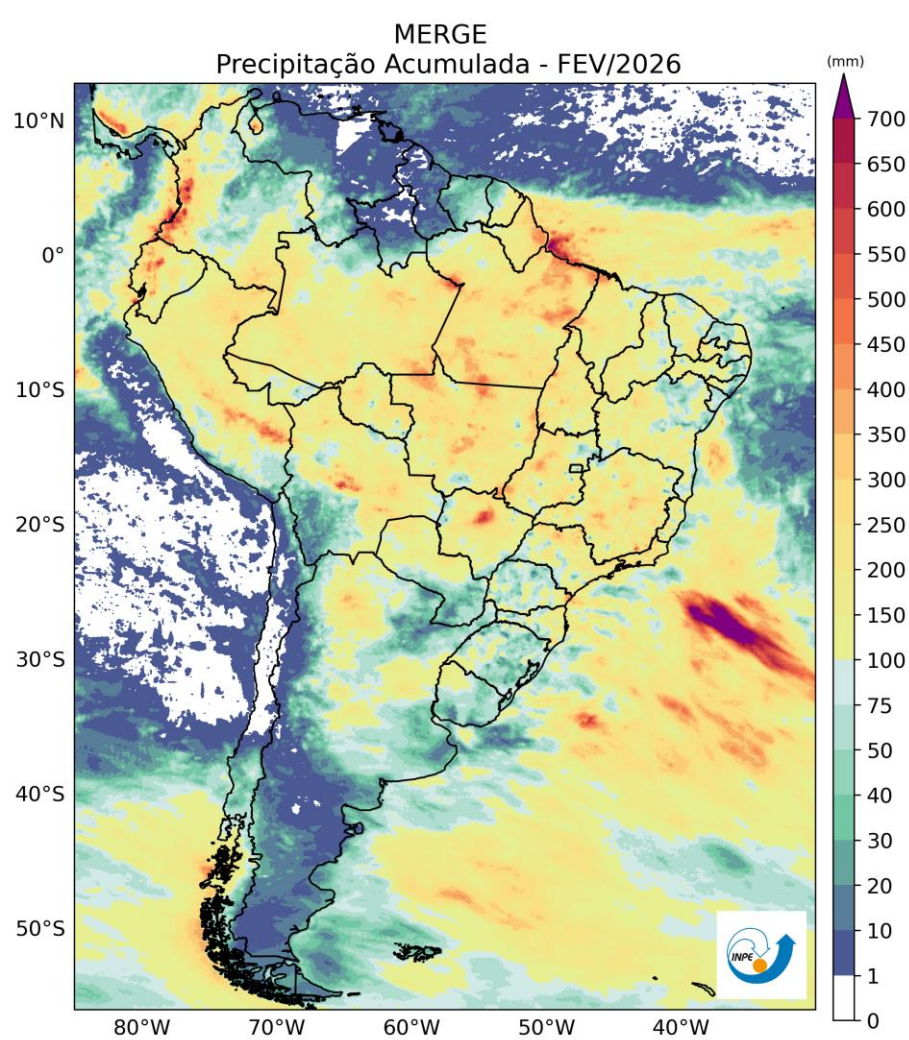
### Precipitación río Paranapanema - MERGE/CPTEC

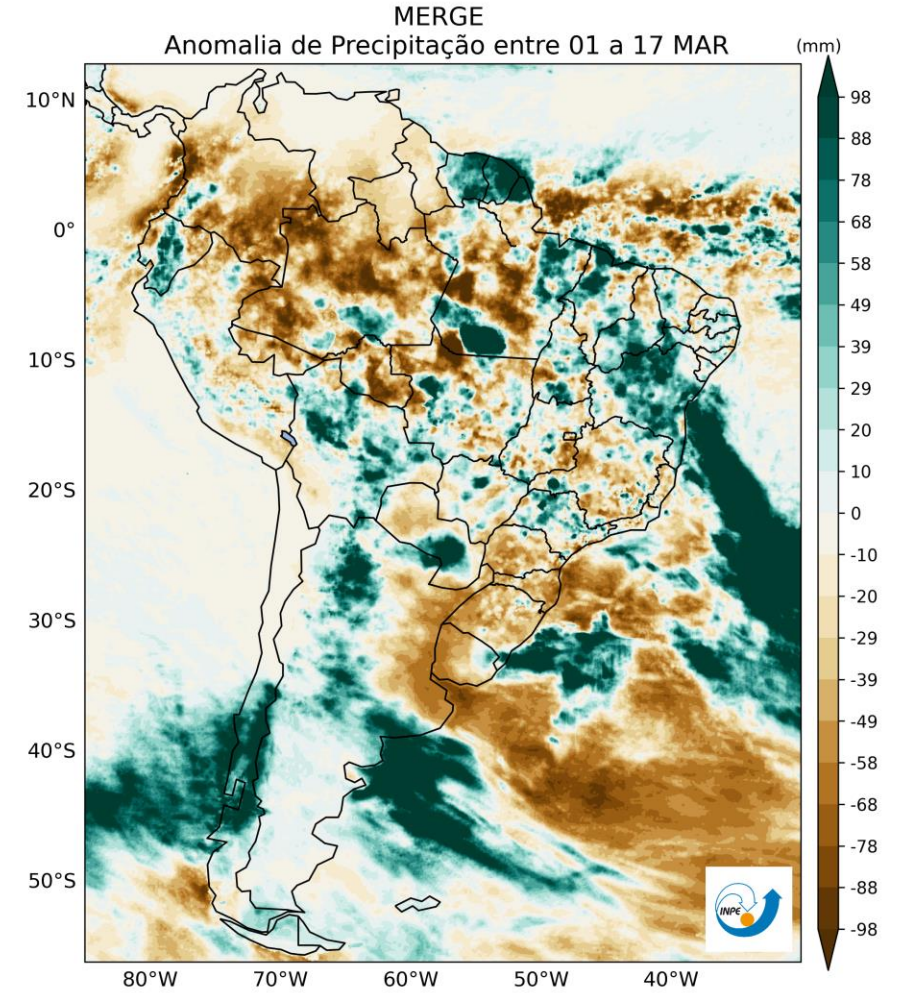
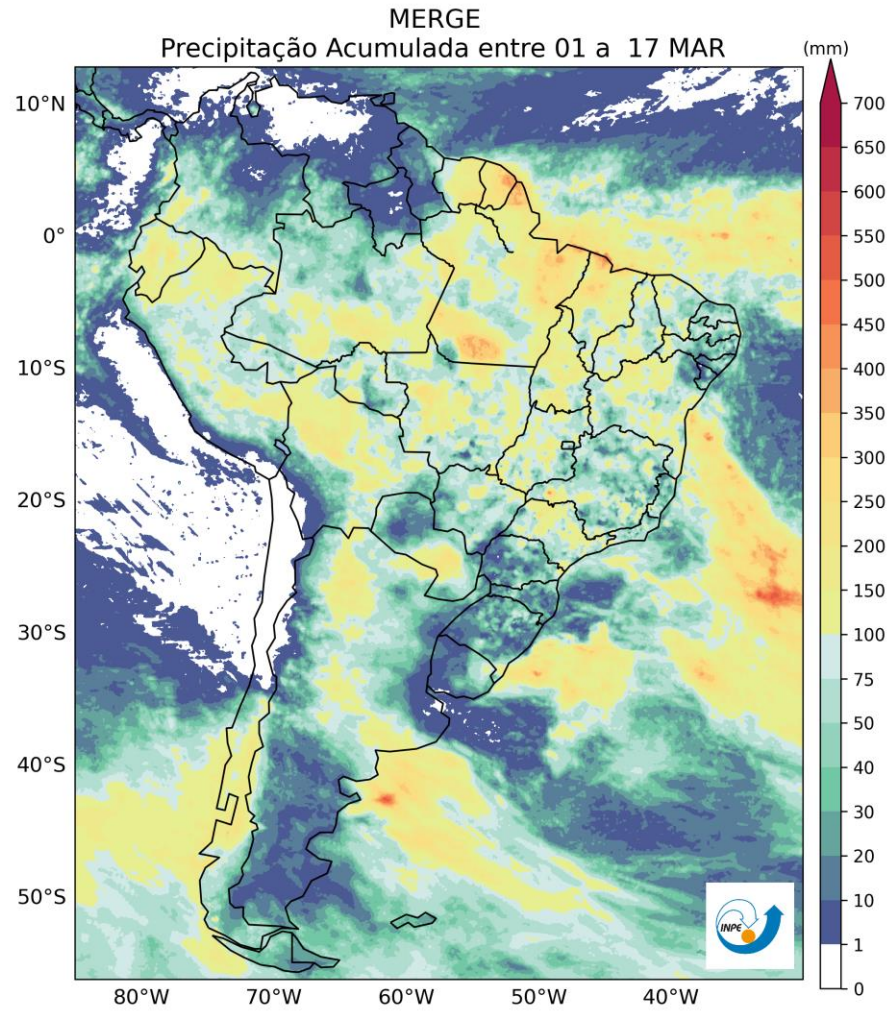


## Precipitación Incremental - acumulado mensual (CHIRPS)



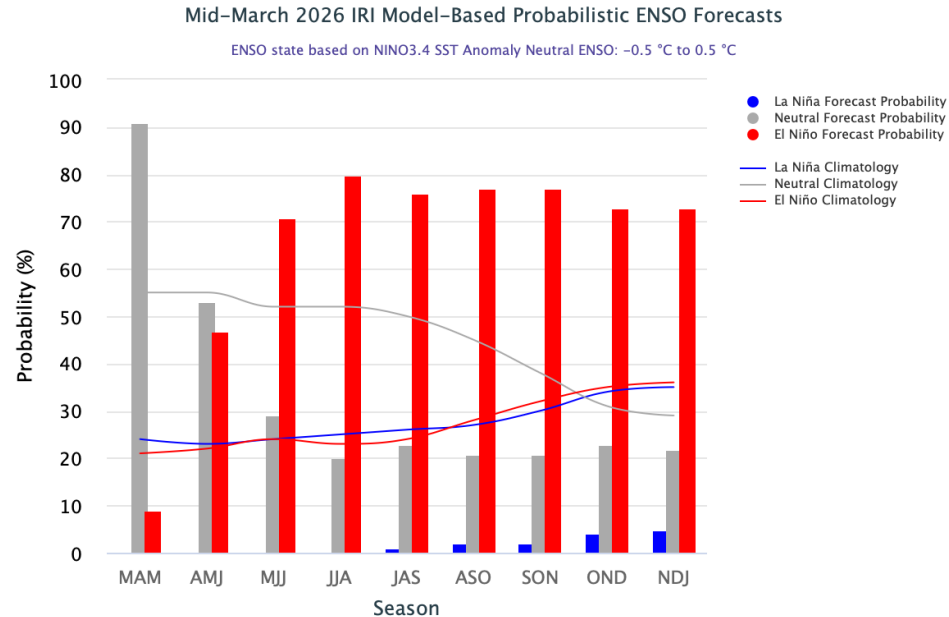
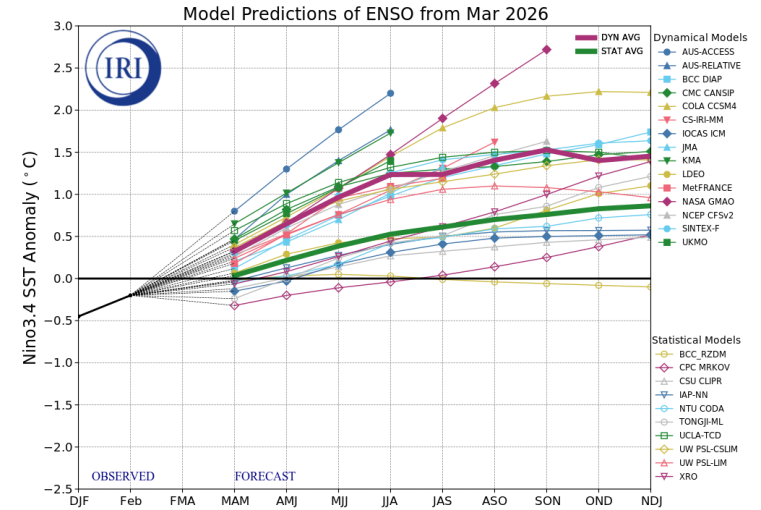
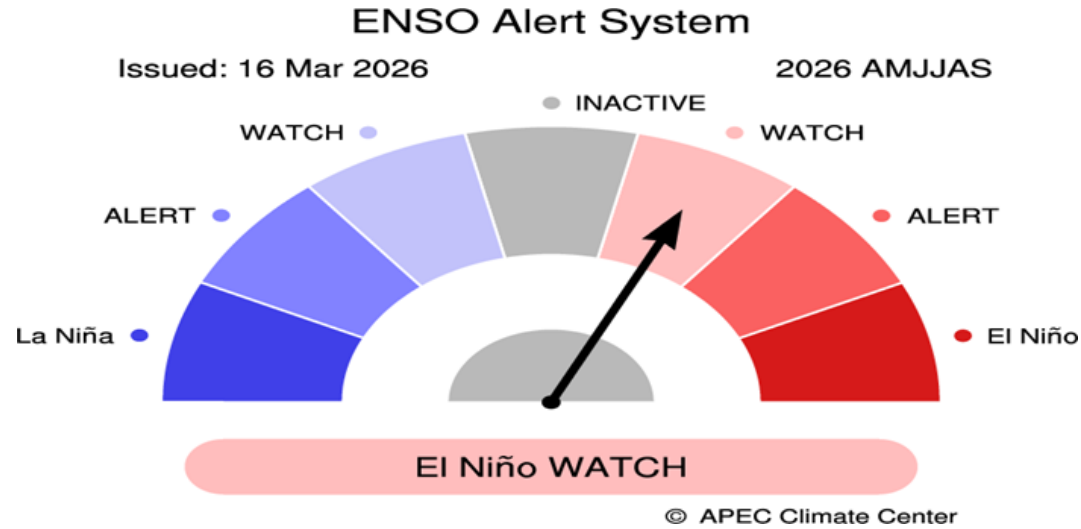




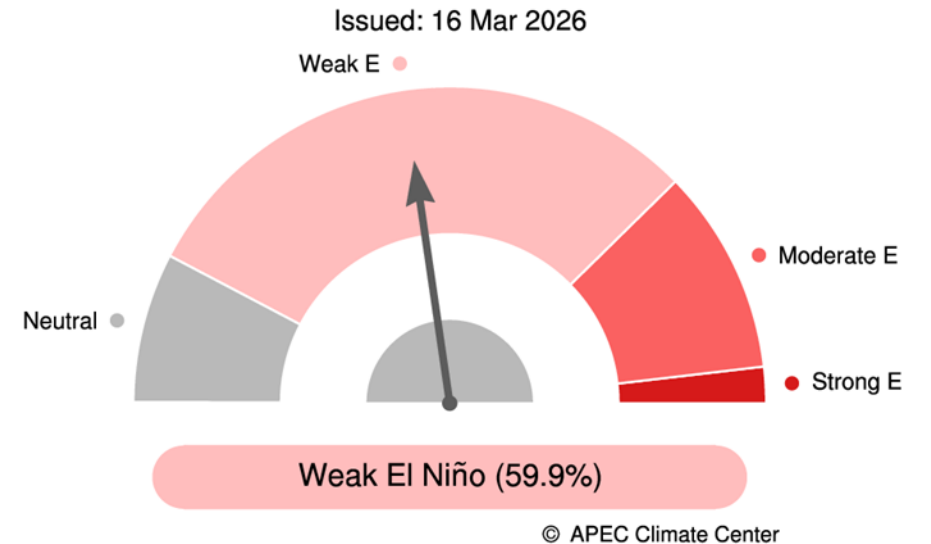


# ANÁLISIS CLIMÁTICO

# PREVISIÓN CLIMÁTICA ENOS



## Probabilistic ENSO Forecast for AMJ 2026

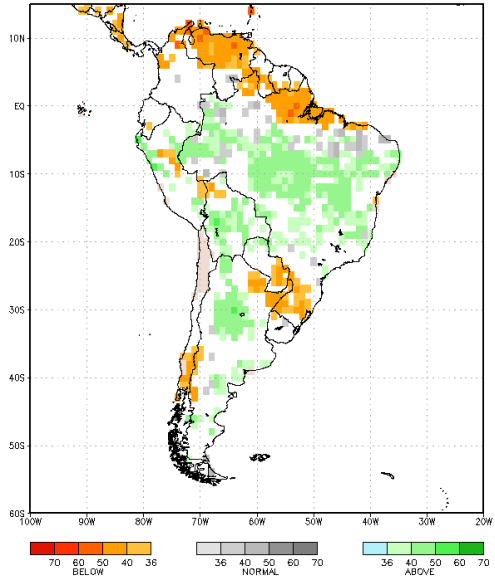


\* ENSO Intensity based on 3M Mean Nino3.4 SST Anomaly (Category Boundaries: +/-1.5, 1.0, 0.5°C)

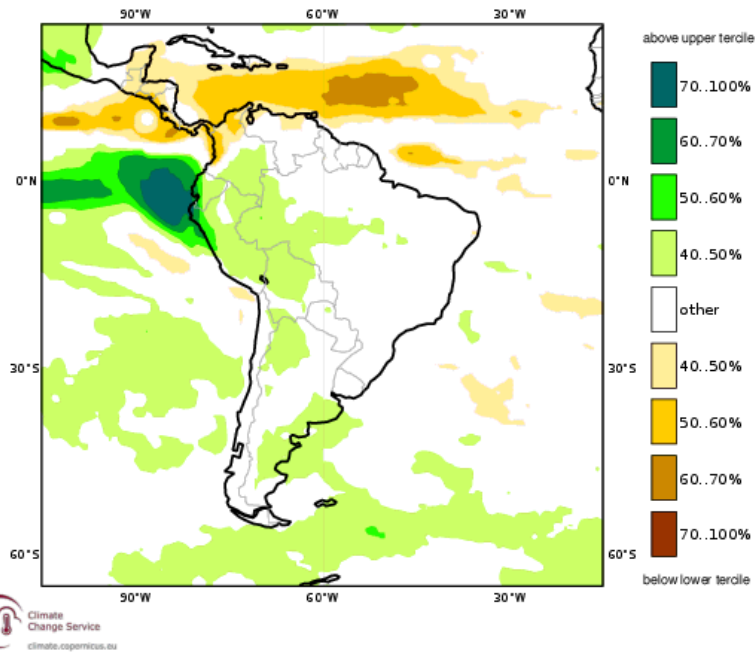
# ANÁLISIS CLIMÁTICO

# PREVISIÓN TRIMESTRAL DE LLUVIA ABR-MAY-DIC 2026

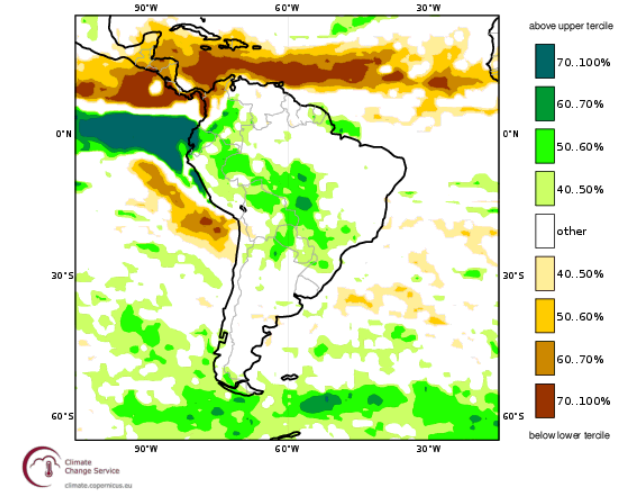
NMME Precip Prob. Mar16 Apr2026-Jun2026 Fcst Sand color: Apr-Jun DryClim Mask



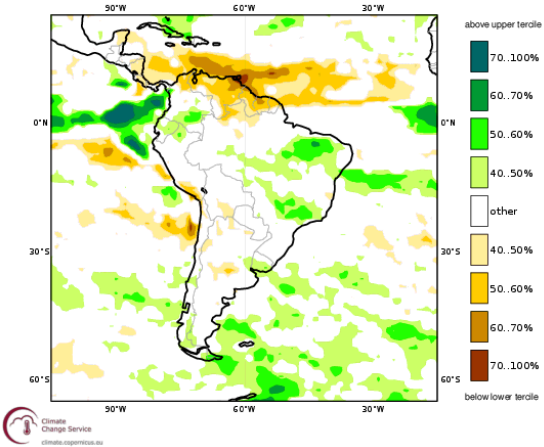
C3S multi-system seasonal forecast ECMWF/Met Office/Météo-France/CMCC/DWD/NCEP/ECCC/BOM  
 Prob.(most likely category of precipitation)  
 Nominal forecast start: 01/03/26  
 Unweighted mean  
 AMJ 2026



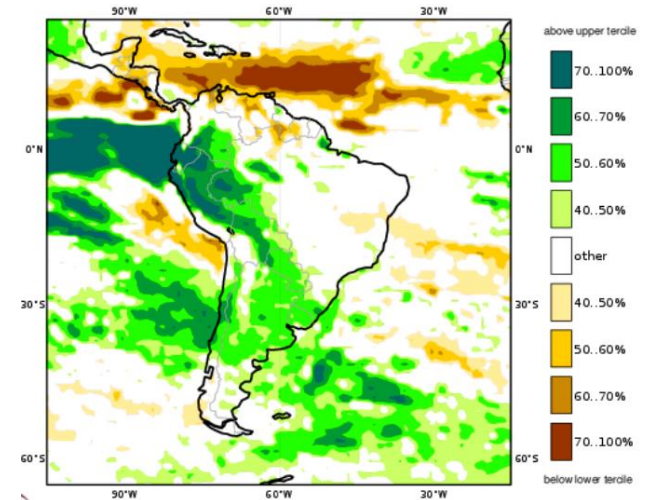
C3S: ECMWF contribution  
 Prob.(most likely category of precipitation)  
 Nominal forecast start: 01/03/26  
 Ensemble size = 51, climate size = 600  
 AMJ 2026



C3S: JMA contribution  
 Prob.(most likely category of precipitation)  
 Nominal forecast start: 01/01/26  
 Ensemble size = 55, climate size = 240  
 AMJ 2026



C3S: BOM contribution  
 Prob.(most likely category of precipitation)  
 Nominal forecast start: 01/03/26  
 Ensemble size = 55, climate size = 648  
 AMJ 2026



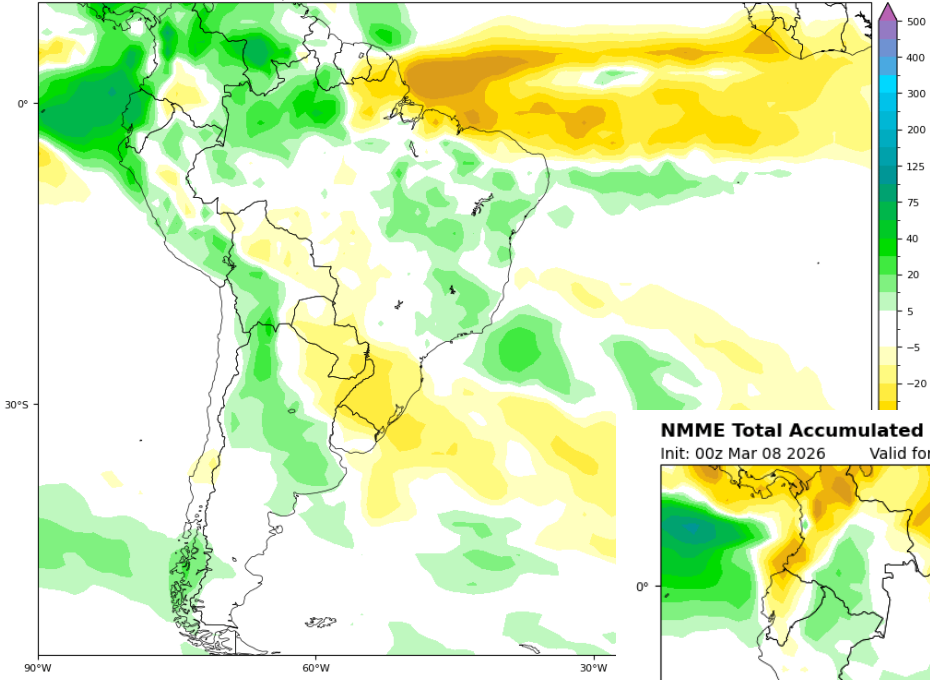
# ANÁLISIS CLIMÁTICO

# PREVISIÓN ANOMALIA MENSUAL DE LLUVIA

**NMME Total Accumulated Precipitation Anomaly (mm)**

Init: 00z Mar 08 2026 Valid for: Apr 2026

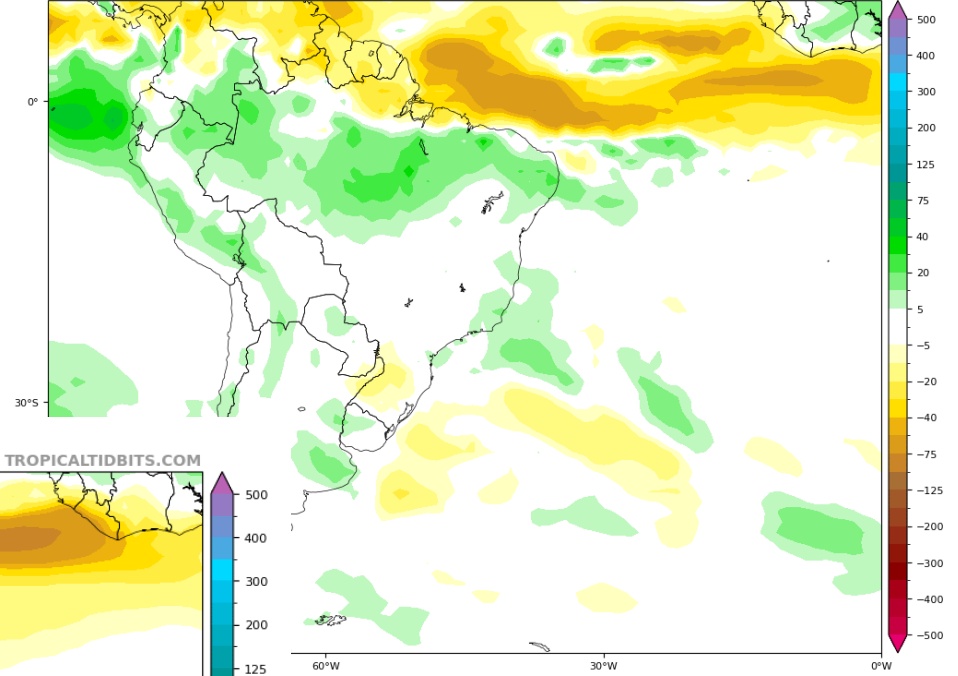
TROPICALTIDBITS.COM



**NMME Total Accumulated Precipitation Anomaly (mm)**

Init: 00z Mar 08 2026 Valid for: May 2026

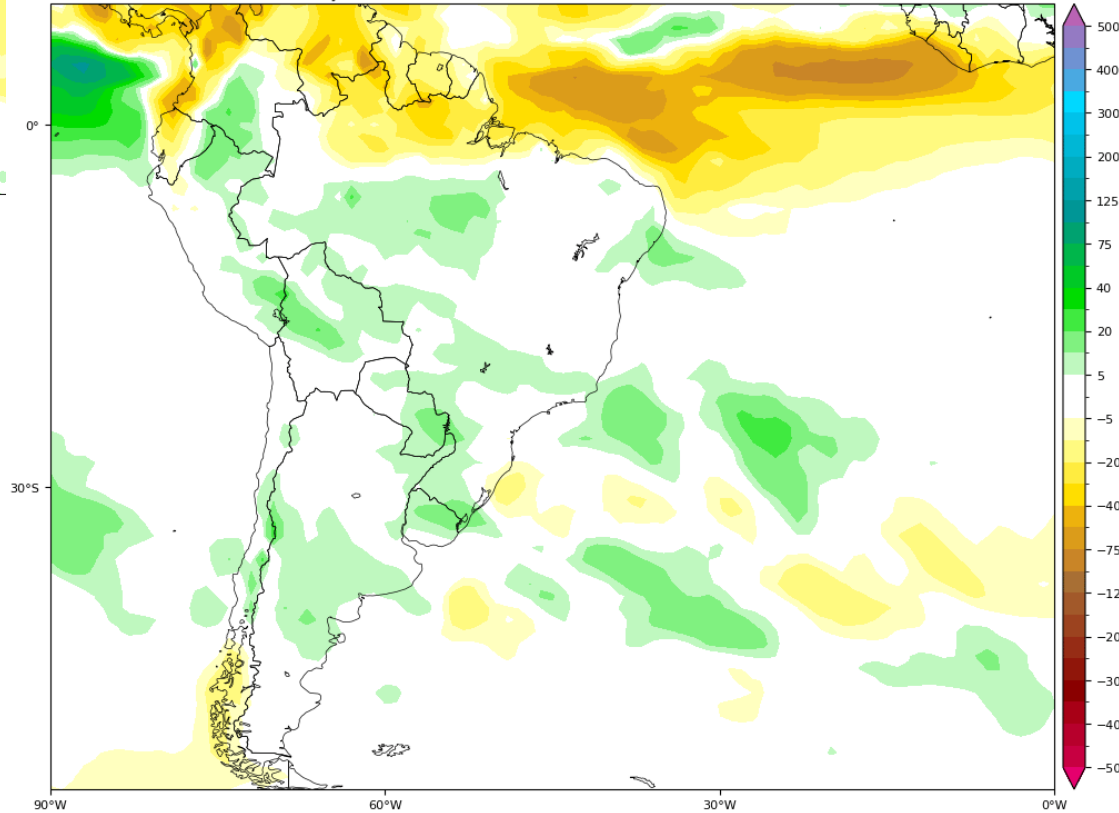
TROPICALTIDBITS.COM

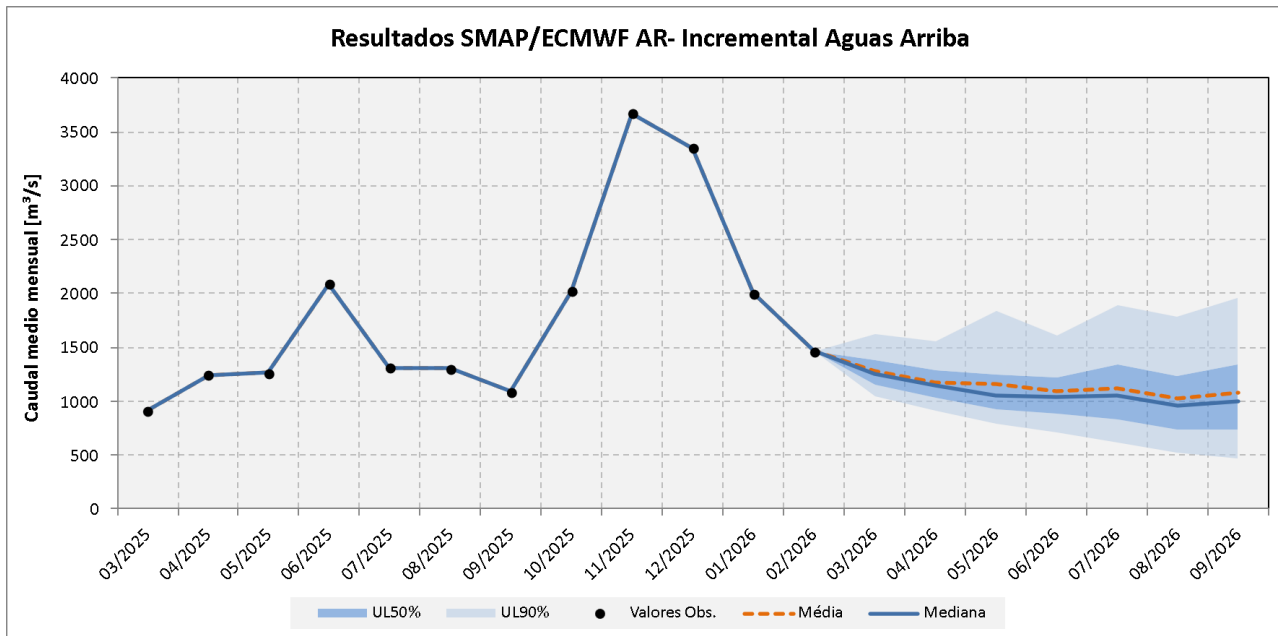
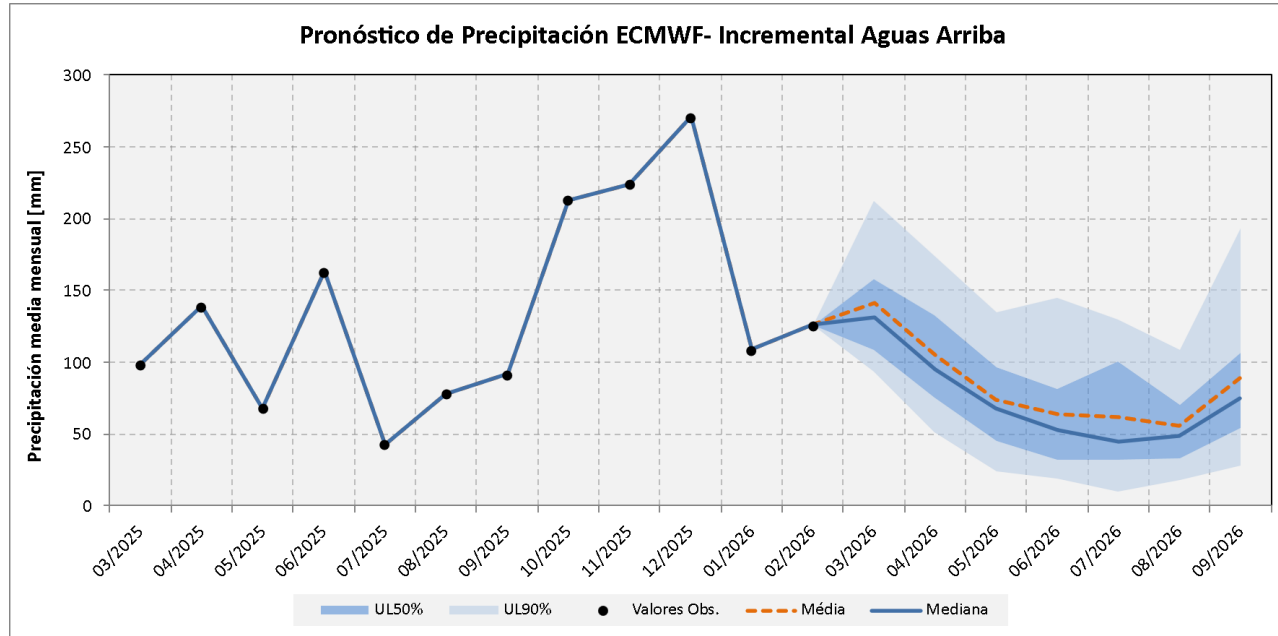


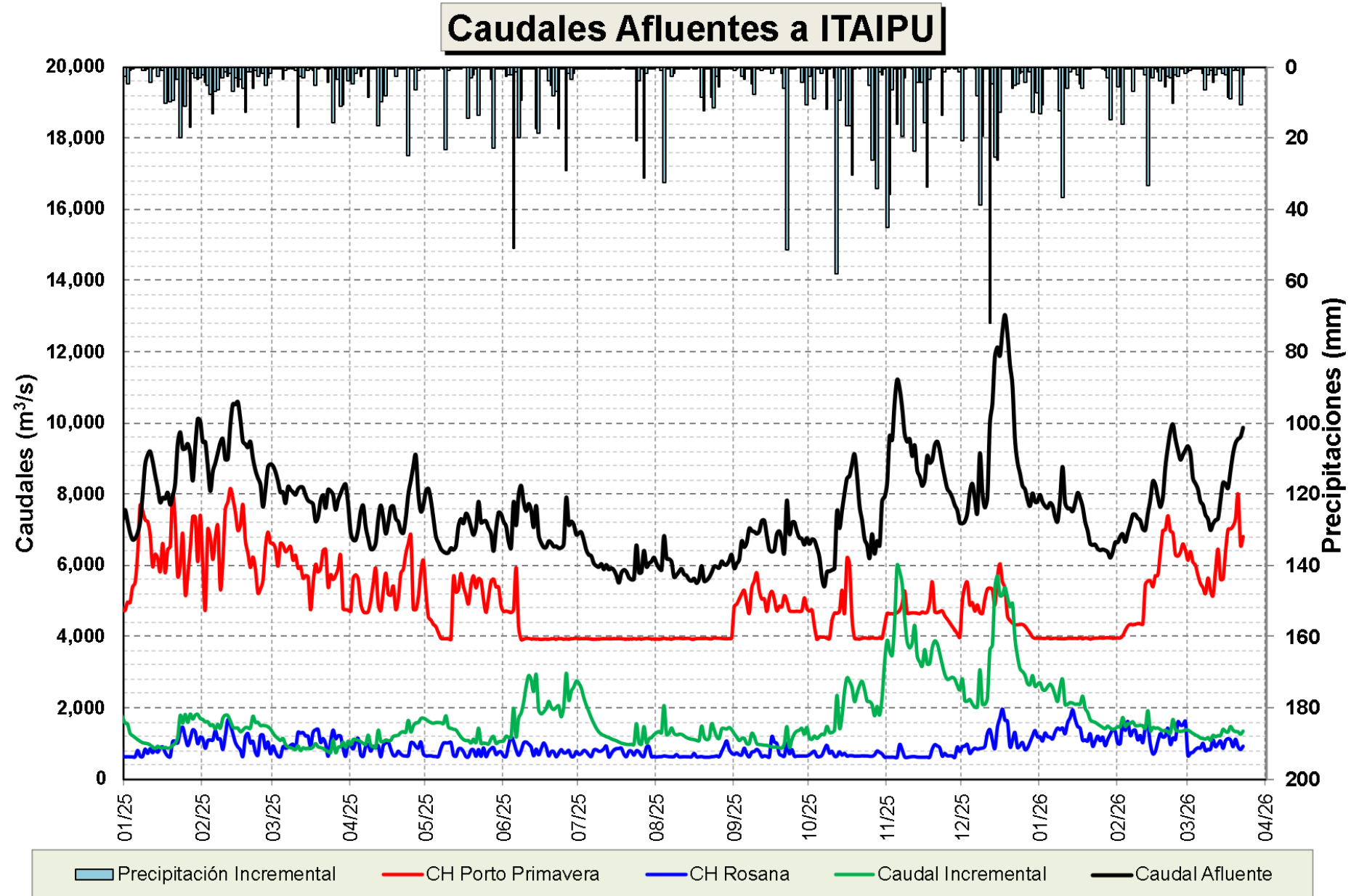
**NMME Total Accumulated Precipitation Anomaly (mm)**

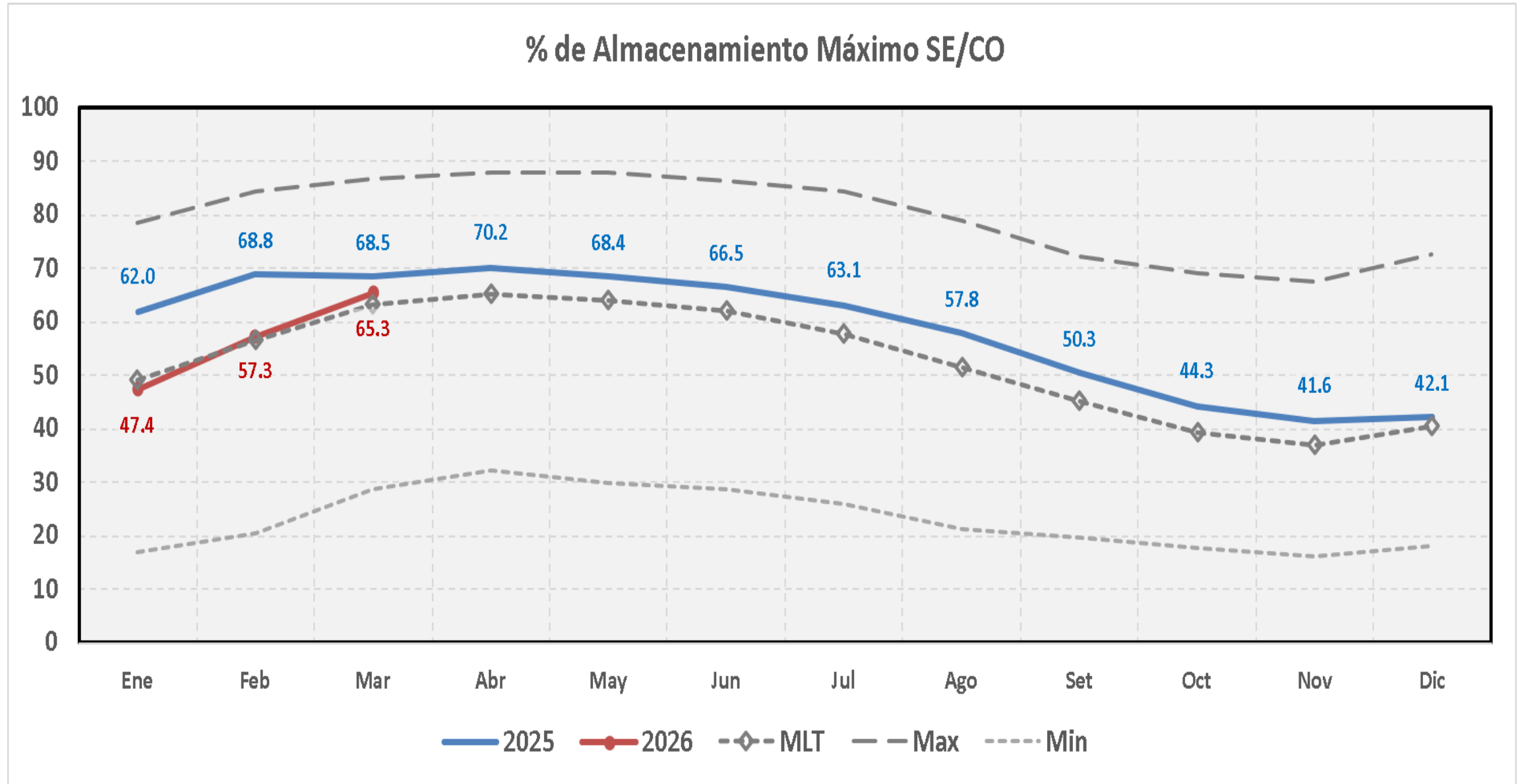
Init: 00z Mar 08 2026 Valid for: Jun 2026

TROPICALTIDBITS.COM

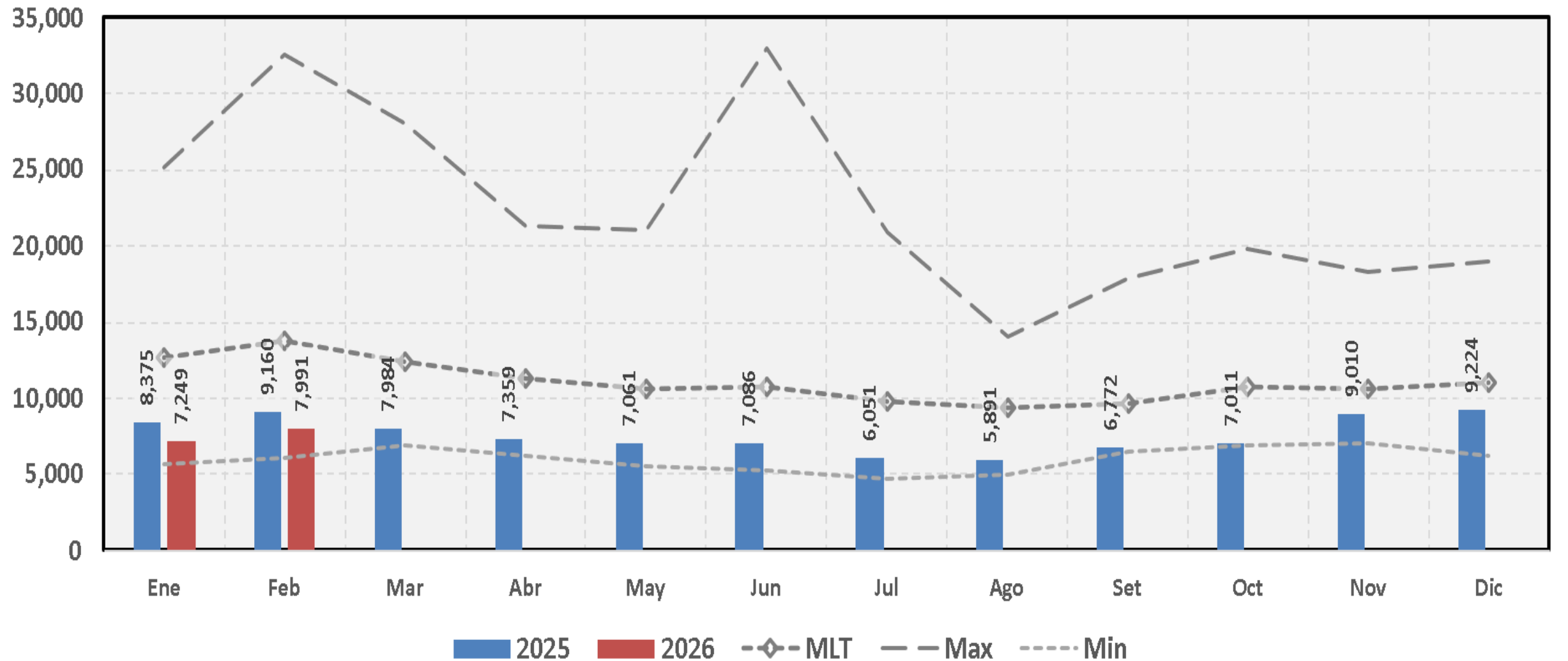




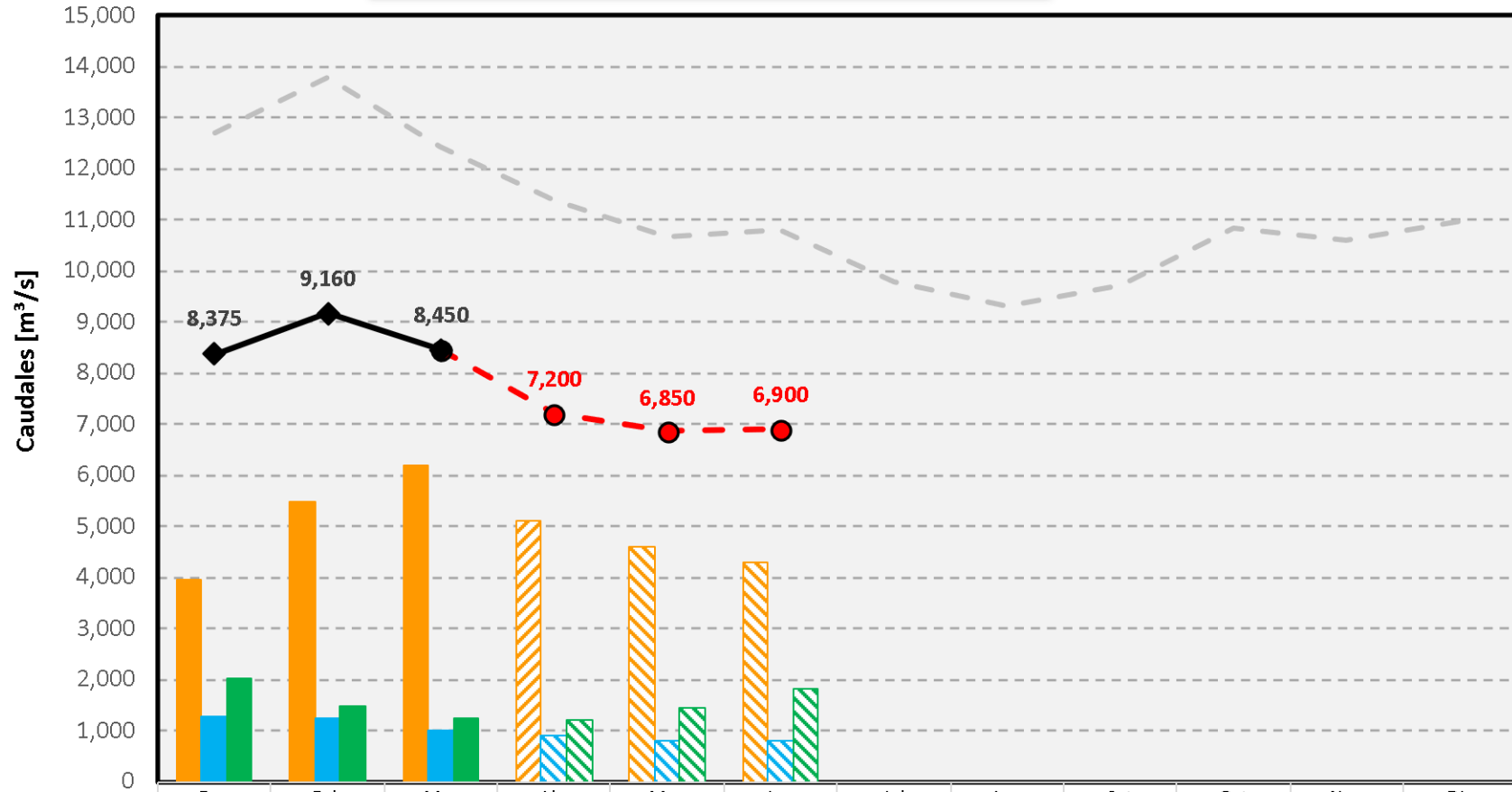




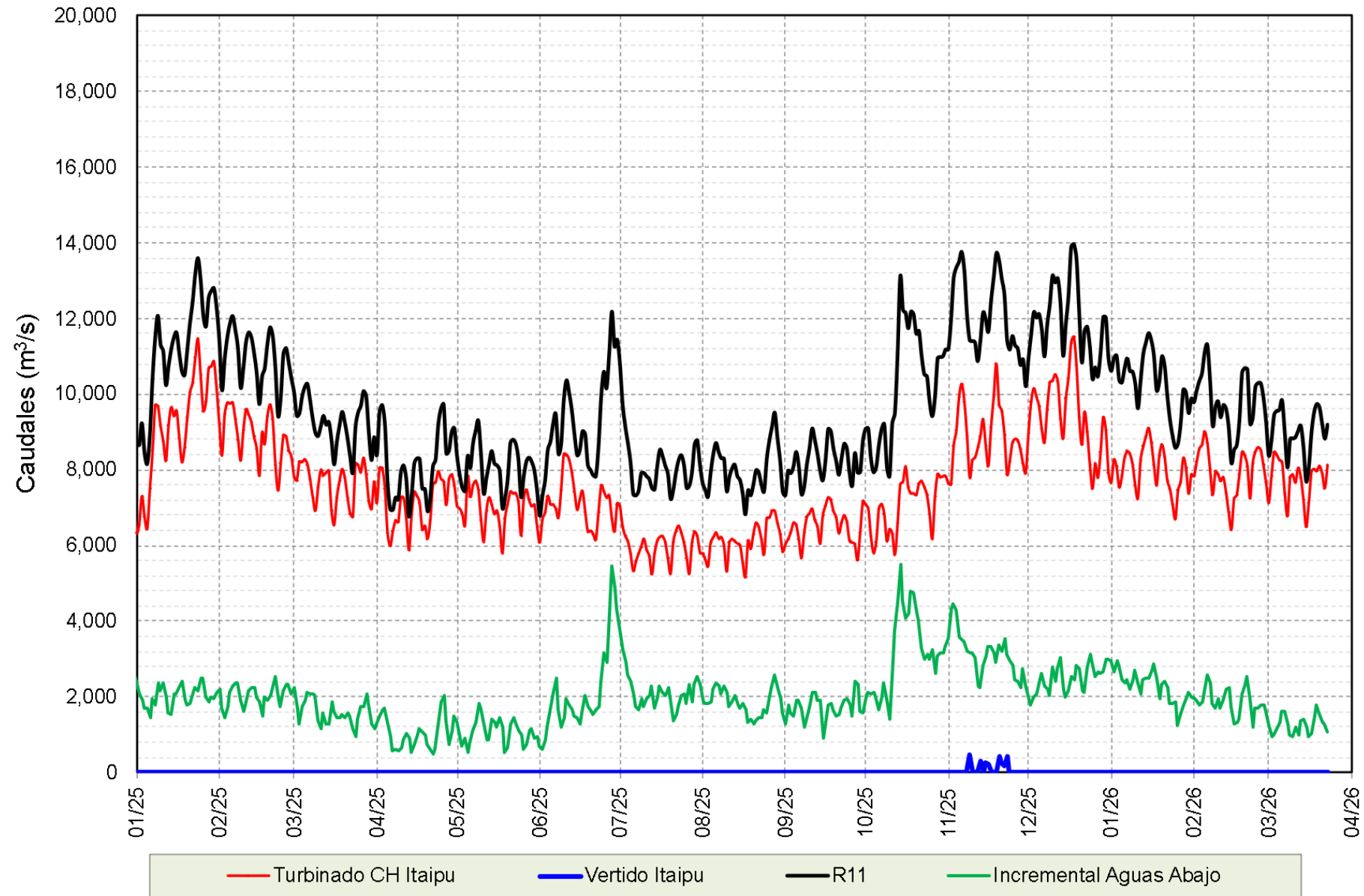
## Afluencia a Itaipu



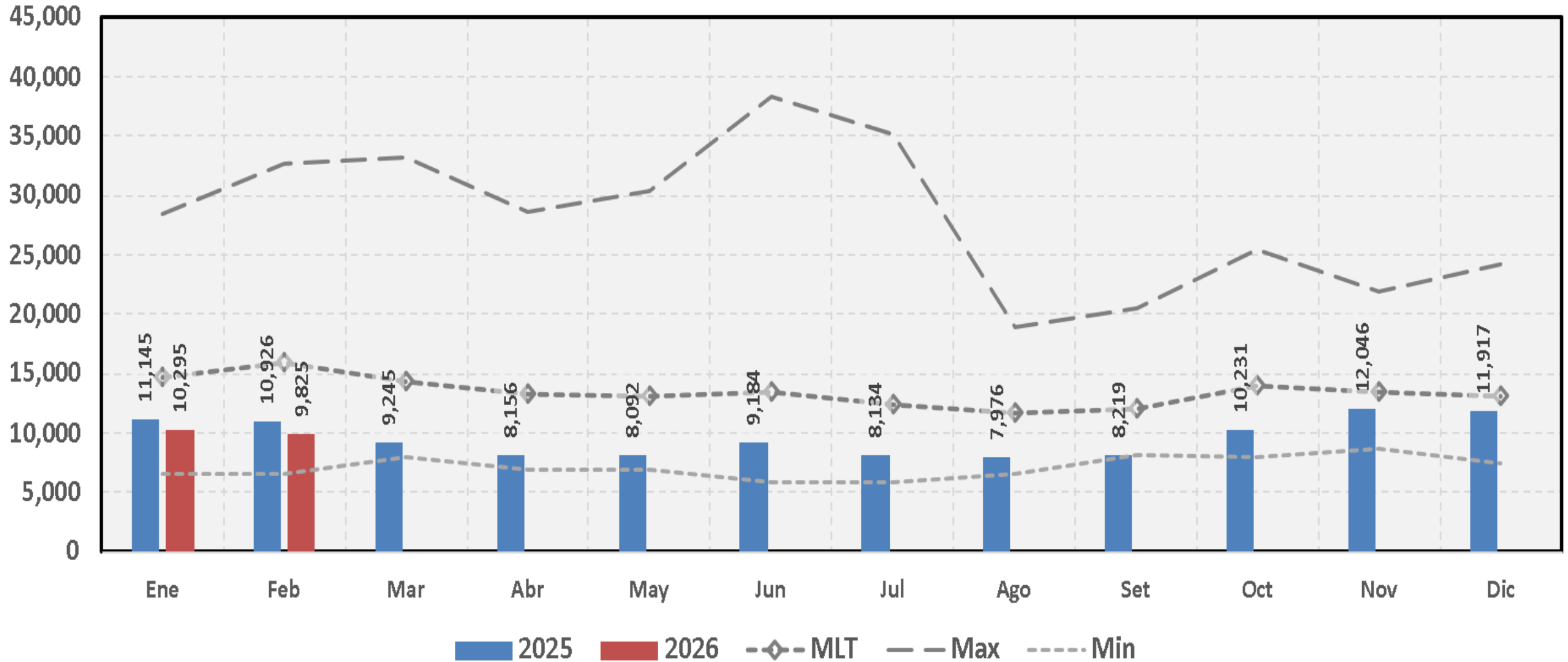
## CAUDALES AFLUENTES A ITaipu - AÑO 2026



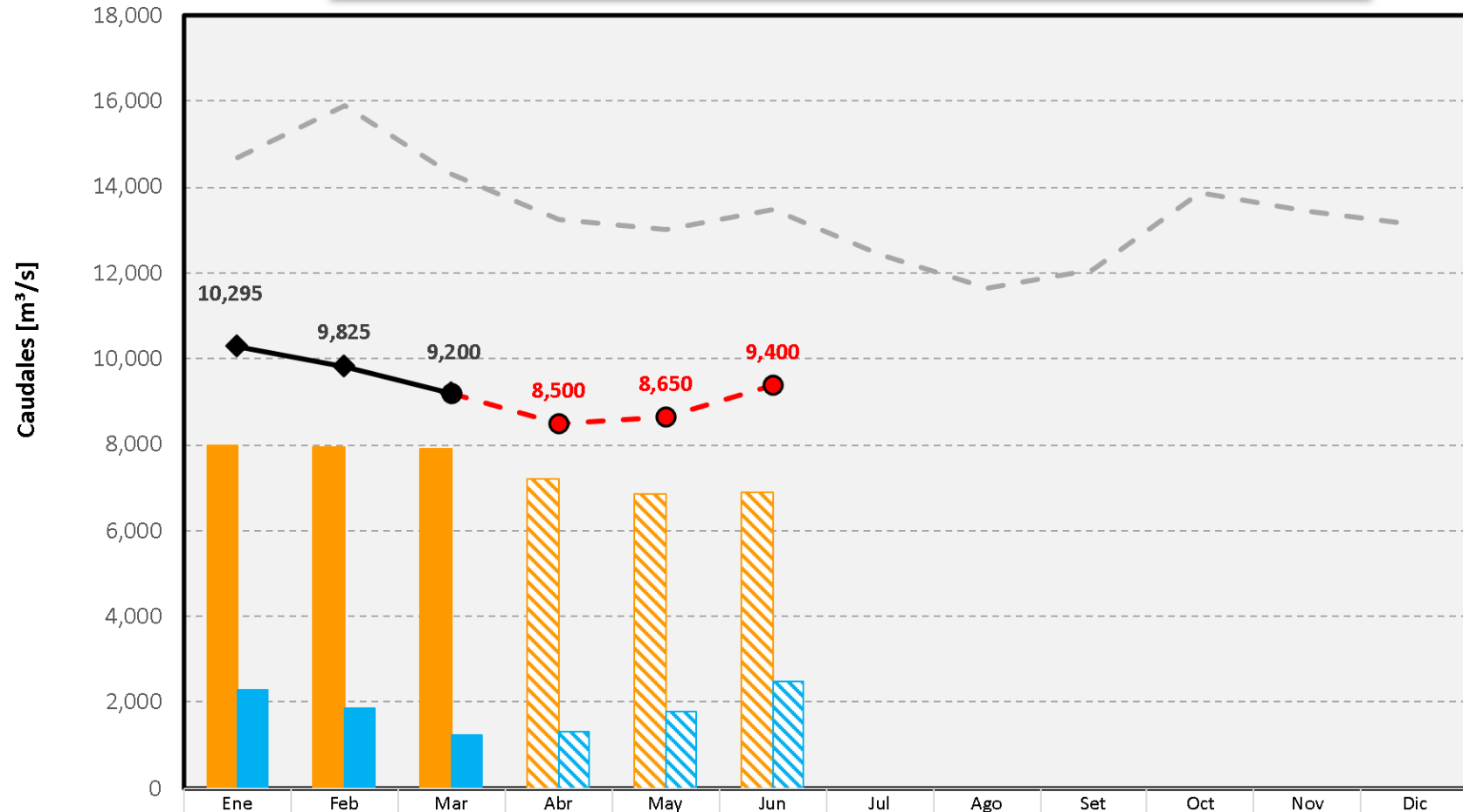
	Ene	Feb	Mar	Abr	May	Jun	Jul	Ago	Set	Oct	Nov	Dic
CH Primavera	3,950	5,479	6,200	5,100	4,600	4,300						
CH Rosana	1,278	1,244	1,000	900	800	800						
Q Incremental	2,027	1,465	1,250	1,200	1,450	1,800						
Previsión de Afluencia			8,450	7,200	6,850	6,900						
Afluencia Observada	8,375	9,160	8,450									
Promedio 1999/2025	12,704	13,775	12,433	11,362	10,666	10,792	9,788	9,319	9,713	10,820	10,589	10,967

**Caudales rio Paraná - Aguas Abajo**

Caudales en R11



## CAUDALES PROMEDIOS MENSUALES EN LA ESTACIÓN R11 - AÑO 2026



	Ene	Feb	Mar	Abr	May	Jun	Jul	Ago	Set	Oct	Nov	Dic
Descargas ITAIPU	7,999	7,947	7,900	7,200	6,850	6,900						
Incremental R11	2,297	1,878	1,250	1,300	1,800	2,500						
Caudales R11 Previstos			9,200	8,500	8,650	9,400						
Caudales R11 Observados	10,295	9,825	9,200									
Promedio 1983/2025	14,684	15,892	14,304	13,255	13,032	13,483	12,413	11,657	12,063	13,877	13,439	13,142



¡GRACIAS!

OPSH.DT



DIRECCIÓN TÉCNICA  
DIVISIÓN DE ESTUDIOS  
HIDROLÓGICOS Y ENERGÉTICOS